

# Spotlighting power dynamics: Metacoupling as a lens for understanding equitable resilience in southern African

## Case studies

The objective of this study was to use a metacoupling approach to spotlight equity dynamics that can strengthen or undermine resilience in interconnected and cross-scale value-chains. We investigated three local-level case studies involving value chains that have transboundary or metacoupled interactions (as depicted in Figure 1):



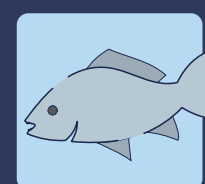
### Breede Catchment, South Africa:

Export of stone and pome fruit to Europe, UK and Russia from South Africa



### Groot Letaba Catchment, South

**Africa:** Export of citrus to Europe, UK, Russia and China from South Africa.



### Transboundary fish trade, Namibia:

Export of fish stocks to Zambia and DRC from Zambezi region, Namibia

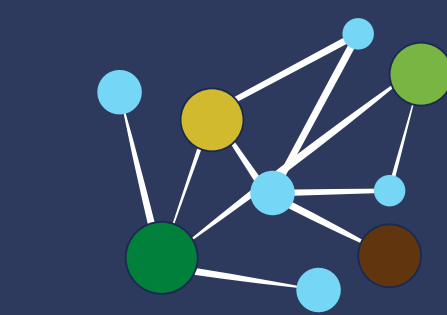
**We focused specifically on factors that might enable or constrain equity dynamics, that is, focusing on actors and/or institutions, agency and power dynamics at various mediation points in the value chains to identify potential leverage points for intervention.**

We applied the learning from these case studies in a fourth case to explore the utility of a metacoupling framework for understanding equitable resilience in the context of Biosphere Reserves.



Figure 1: Schematic showing the main flows of citrus, fish, and stone and pome fruit from the case studies to a range of global regions

## Metacoupling framework were used in case studies to:



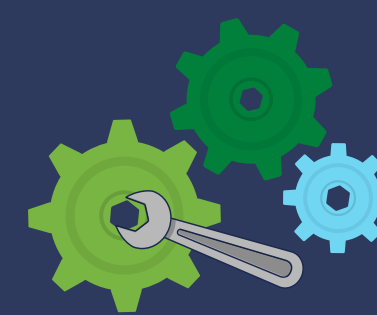
Identify coupled systems



Gather relevant data on the  
dynamics of each system



Analyse interactions



Explore potential use  
of the outputs

**To read and learn more  
on Enhancing equity  
and resilience in an  
interconnected world:**

