



GLOBAL RESILIENCE PARTNERSHIP

Virtual Partners Meeting

6 May 2025

Meeting Summary



The GRP virtual Partners Meeting held on 6th May 2025 was attended by over 50 attendees.

The meeting provided updates on GRP's 2025 key activities, how partners can get involved, and partners were invited to share their inputs on how we can collaborate more effectively this year.

Additionally, we reflected on the current state of affairs in the development sector.

The insights and engagement shared during the meeting have sparked valuable momentum, creating strong pathways for deeper collaboration and joint action as we look ahead to 2025. We're excited to build on these discussions as we work together to drive impactful, locally led resilience action in the year ahead.

Agenda



| Time | What |
|-------|--|
| 13:00 | Introduction and Welcome Reflecting on current state of affairs |
| 13:10 | Presentation from Secretariat on key topics <ul style="list-style-type: none">- Innovation challenges- South to South Resilience Academies- Private Sector engagement |
| 13:25 | Q&A about the above key topics |
| 13:35 | Presentation from Secretariat on key topics <ul style="list-style-type: none">- Resilience Hub- Resilience Science Must-Knows: A Road to Action for Decision-Makers- Partnership engagement |
| 13:50 | Q&A about the above key topics |
| 14:00 | Breakout groups to dive deeper into topics <ol style="list-style-type: none">1. Innovation Challenges2. Road to Action & roadmap to COP30 (Resilience Science Must-Knows and Road to Action and Resilience Hub)3. South to South Resilience Academies4. Private Sector engagement5. Partnership engagement |
| 14:20 | Announcements and Closing |

GRP Innovation Challenges



Ongoing challenges

- **Resilient Agriculture Innovation for Nature (RAIN) Rural Challenge** - with Munich Re Foundation and Shockwave Foundation
- **Resilience Innovation through Scaling Entrepreneurship (RISE) Urban Challenge**
- **Hindu Kush Himalaya Innovation Challenge for Entrepreneurs (HKH-ICE)** - with ICIMOD / FCDO
- **Adaptation Fund Climate Innovation Accelerator (AFCIA)** - with UNDP / Adaptation Fund

New challenges

- **Tech4Resilience Challenge** - with BCG, WWF and Think City (Nature x Tech) and Gates Foundation (emergency)
- **Latin America Challenge** - with WWF-Colombia and ClimateExplorer



Get involved in Innovation



Our innovation challenges promote the emergence of transformative solutions from the bottom-up. This approach differs from conventional funding as applicants have freedom in designing innovative solutions to the most pressing problems. The funds are focused on outcomes and the implementation pathways are not prescribed. We invite partners to join GRP in this transformative initiative as ecosystem partners.

Funding support we are looking for:

- **Core funding** for the execution of the Challenges and support to winners
- Fund and co-create **bespoke thematic or geography** specific Challenge Funds
- **Funding prizes** for specific winner(s) of the Challenges
- **Sponsor events** (kick-off event, final selection of winner(s), award ceremony, investor forum)

In-kind support to innovation challenges:

- Promotional support
- Participating in events
- Acting as experts and mentors
- Match-making with funders

Why **get involved**:

- Early access to innovators
- Access to network of experts
- Contribution towards accelerating resilience in the Global South

South-to-South Resilience Academies



Aims to mobilise transdisciplinary teams of academics, thought leaders, and non-academics from the Global South, to contribute to regional and global policy discussions around resilience and development, and elevate Global South voices & insights in international fora.

Why?

- A pressing need for a systemic **shift in knowledge leadership towards the Global South**: acknowledge geographic gaps, biases in theoretical perspectives, and historical inequities in access to scholarly and policy influence.
- Those living closest to these challenges are **best placed to define and address** them, necessitating the amplification of their voices in global discourse

How?

Each regional academy convenes a set of working groups that meet both in person & online, to produce academic products & strategic science-policy or science-practice engagement processes.

Advancing Resilience





South to South Resilience Academies

2025 Plans

Southern African Resilience Academy

- Hold first in-person meeting with 8 selected working groups (April) ~ *Transformative Pathways* theme
- Online engagements throughout the year
- Develop processes plans for each group
- Co-developed MEL plan for groups

General:

- Advance Latin American Academy set up and planning
- Advance links to REF, Resilience Hubs and other GRP initiatives
- Additional fundraising



SARA

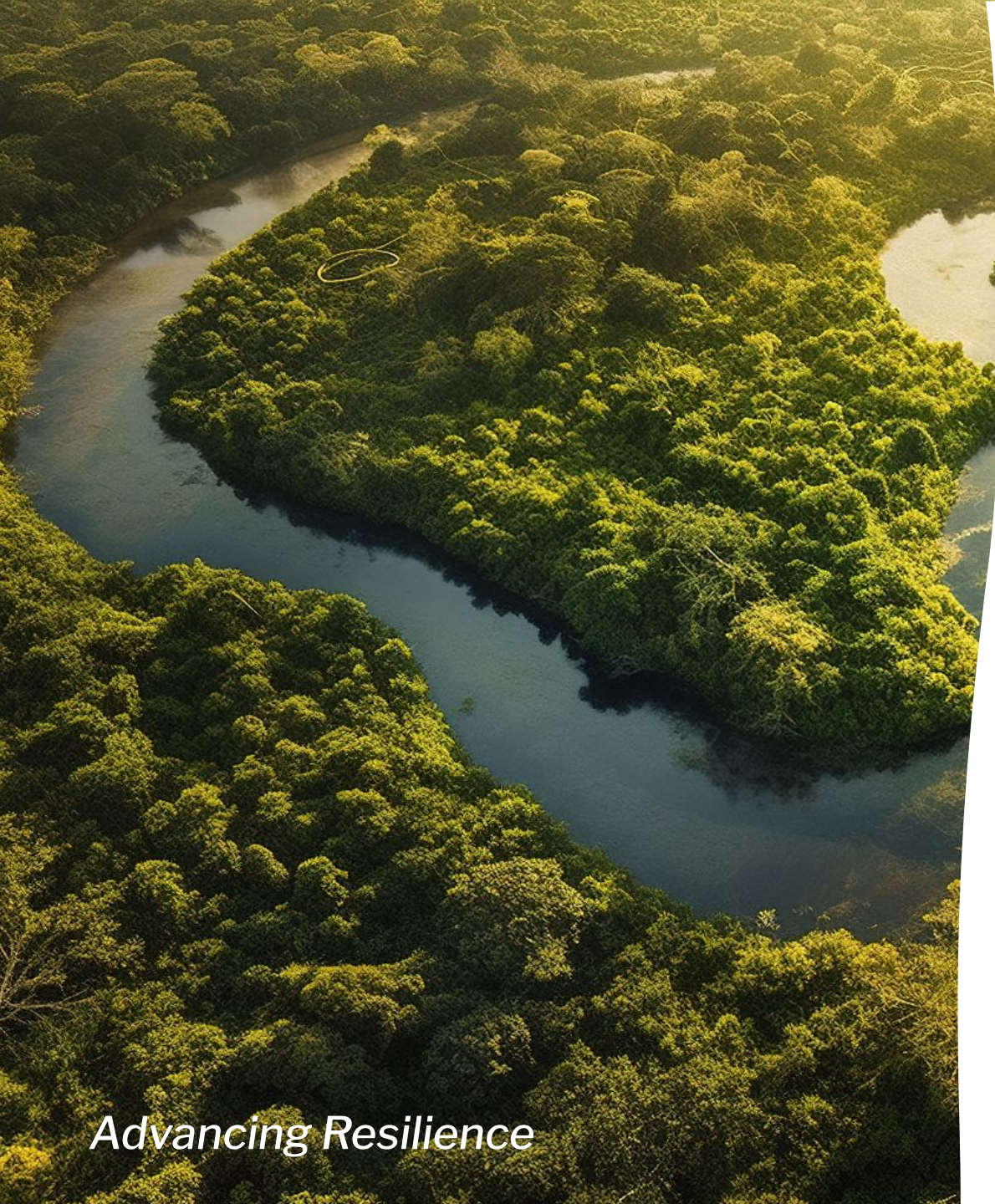


In-kind:

- **Help working groups to mobilise the knowledge they create**- many groups will be actively seeking policy and programmatic uptakes of their findings. If you can help to share, use or expedite the proposed engagement products please reach out.
- **Some groups are seeking advisors on particular topics**-if your organisation has expertise and would like to contribute please reach out.

Funding:

- **Support us to develop new academies around the world**-if you want to develop an academy in your region please let us know and we can fundraise together (providing the blueprint for the process).



Mobilising Business for Adaptation

Our private sector approach aims to:

1. Build the evidence base for adaptation and resilience
2. Support private sector and financial organisations to embed resilience evidence, and
3. Create an enabling environment to increase capital flows into resilience.

Ongoing Projects

1. Collaborating with business leaders

Implemented the PREPARE Call to Action initiative where 39 companies were collectively working towards mobilising a total target of US\$2.8 billion towards climate change adaptation and resilience initiatives. Main activities going forward include:

- Knowledge brokering and learning activities for companies
- Facilitated dialogue and collaboration among companies
- Opportunities for co-investment
- Facilitation public-private dialogue

1. Collaborating with business schools

GRP works to build the evidence base and a robust case for action by collaborating with UNDP and top business schools (IMD Business School in Switzerland, Yale University, University of Oxford, University of Cape Town, IE Spain, and FGV Brazil) through facilitating case study development, knowledge exchange and internships.



Private Sector Engagement

2025 Plans

- High level **in-person leaders convenings** (invite only):
 - London Climate Action Week
 - New York Climate Week
 - COP30
 - India & Hindu Kush Himalayan Region (HKH)
- **Showcase company evidence:** Work with us to strengthen the evidence base and business case for private sector investment in resilience.
- **Join the Road to Action:** sectoral convenings to embed the latest resilience science.
- **Drive resilience innovation:** Invest in our for-profit Challenge winners (core innovation, bespoke challenges, specific prizes, events, in-kind support)

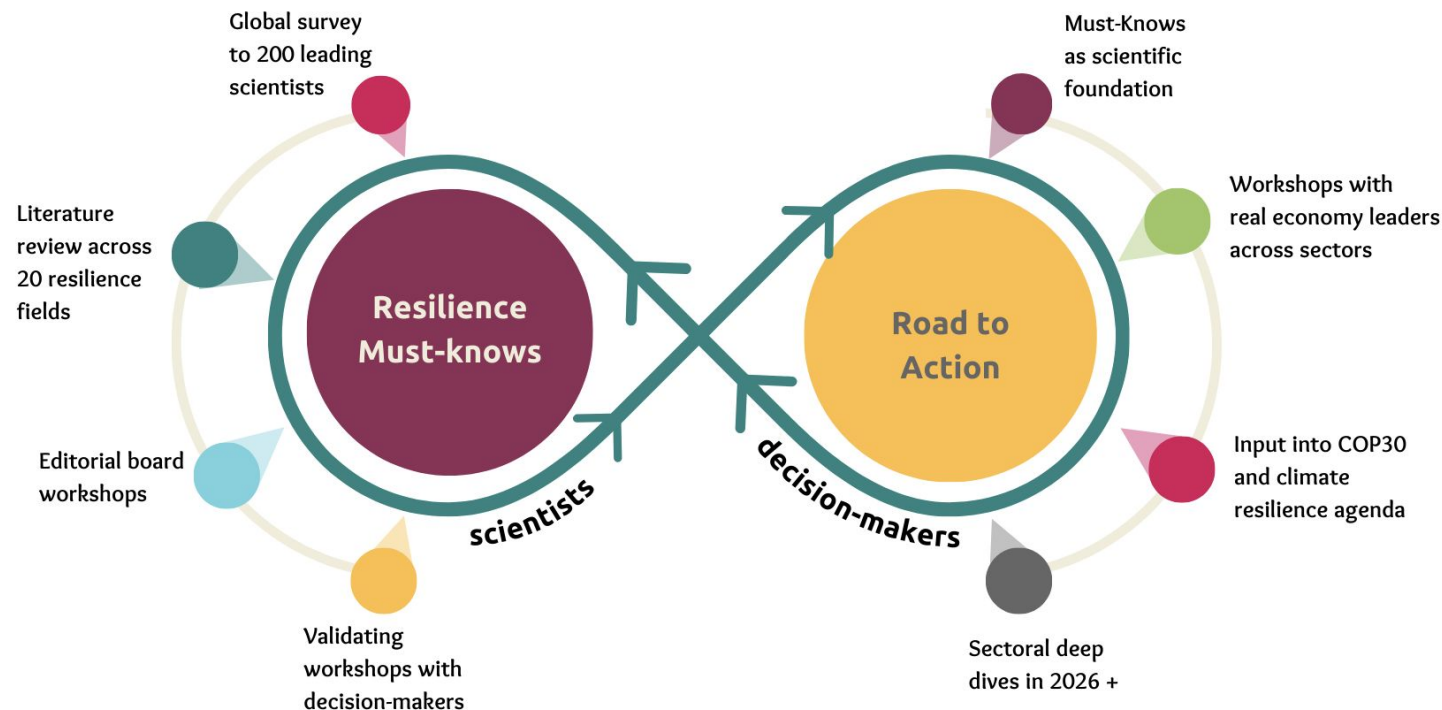


Q&A

Resilience Science Must-Knows & Road to Action

Science-policy-practice initiative with two intertwined processes:

1. Broad scanning and synthesis of resilience science on what are the key insights that can guide decision making and action for meeting global challenges
2. Based on the key insights from the science, generate a Road to Action on Resilience that translates these must-knows into practical action





How to engage in the Resilience Must-Knows and The Resilience Road to Action

May 2025:

Engage on the regional consultation workshops to refine the final list of resilience Must-Knows

From June 2025 and through 2026

- **Resilience Road to Action**

Climate Finance

Food Systems Resilience

Opportunity for other sector deep dives

Engagement can entail:

- Co-leading of sector deep dives including co-funding
- Support and co-lead in the convening of specific Road to Action Workshops/Events
- Engage as participants in Road to Action events
- Advisory role in specific topics

Resilience Science Must-Knows & Road to Action

How and when you can get involved!

Join the Regional Virtual Consultation Workshops

Latin America and the Caribbean: May 15th, Online

Africa: May 22nd, Online

Asia: May 28th, Online

Join the Road to Action

CGAP Symposium on Finance: June, Netherlands

London Climate Action Week: June, London

India Finance Sector convening, August, South Asia

New York Climate Week: September, New York

UNFCCC Africa Regional Climate Week: September, Ethiopia

Advancing Resilience

Latin America and
the Caribbean

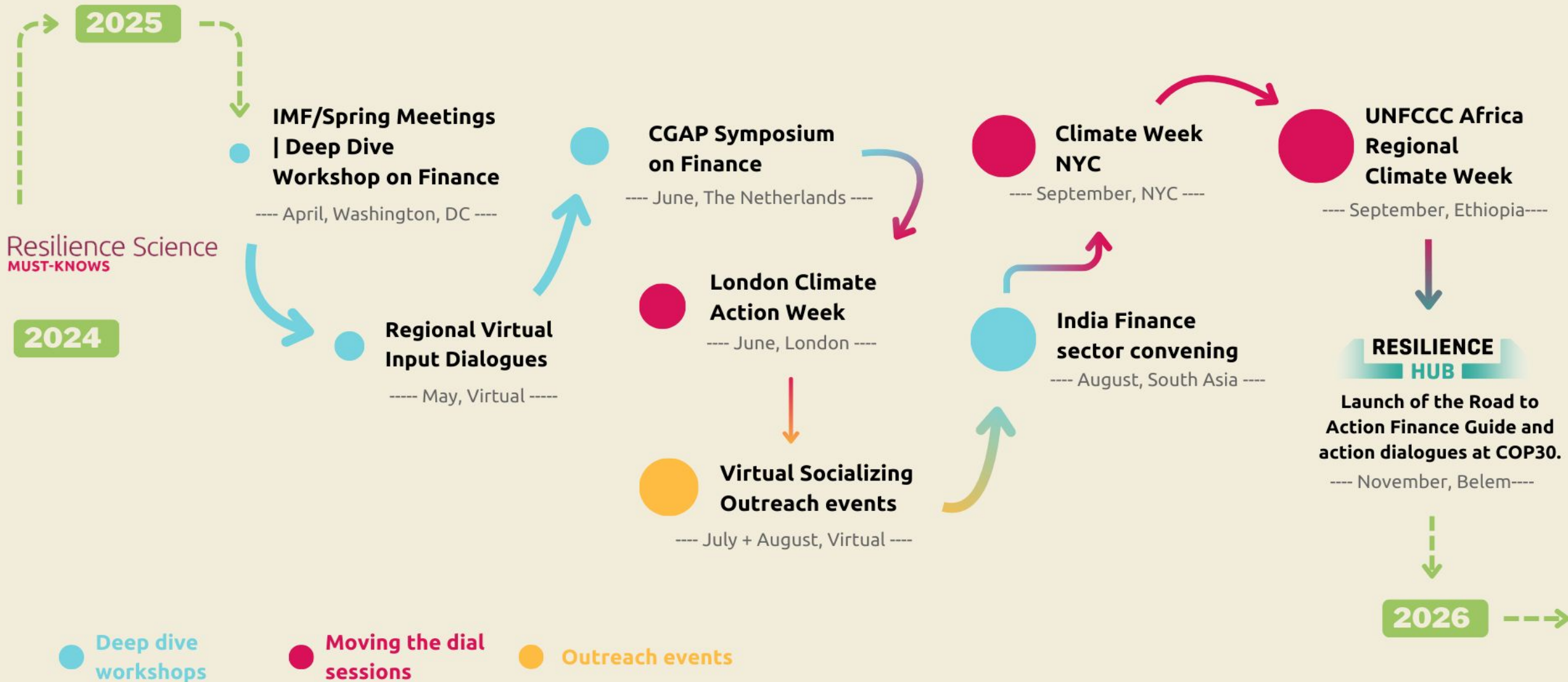


Africa



Asia





The Hub and UN High Level Champions

Rationale - Bridging local and global gaps, platform for collaboration and showcasing impact

Key 2025 Activities:

1. Inclusive Regional Engagements:

- Support Marrakech Partnership for Global Climate Action and Sharm-El-Sheikh Adaptation Agenda as co-leads
- Develop a roadmap of key policy consultation events leading to COP30.
- Support inputs for campaigns (e.g., Impact Makers, Informality Campaign) and UNFCCC Global Stocktake.

2. Resilience Hub at COP30 (Brazil): building direct interlinkages with Road to Action

- Align programming with UNFCCC High-Level Champions and COP Presidency.
- Deliver the Resilience Hub Pavilion as a key advocacy and action platform.





Resilience Hub - How and When you can get involved...

Attend our events! - Registration now open for the following events:



**Regional
Must-Knows
Consultations
May 2025**



**Res Hub
LCAW
24 June 2025**

Programme collaboration opportunities:

LCAW: If your work aligns with what we are planning - we would welcome you reaching out to explore programming collaborations

NYCW/ Africa Climate Week: If your work aligns with what we are planning - we would welcome you reaching out to explore programming collaborations

COP30: Structured EOI process for COP30 (June)

Road to Action Guide: Opportunity to get involved with content /strategy / editorial / financial contributions (if applicable)



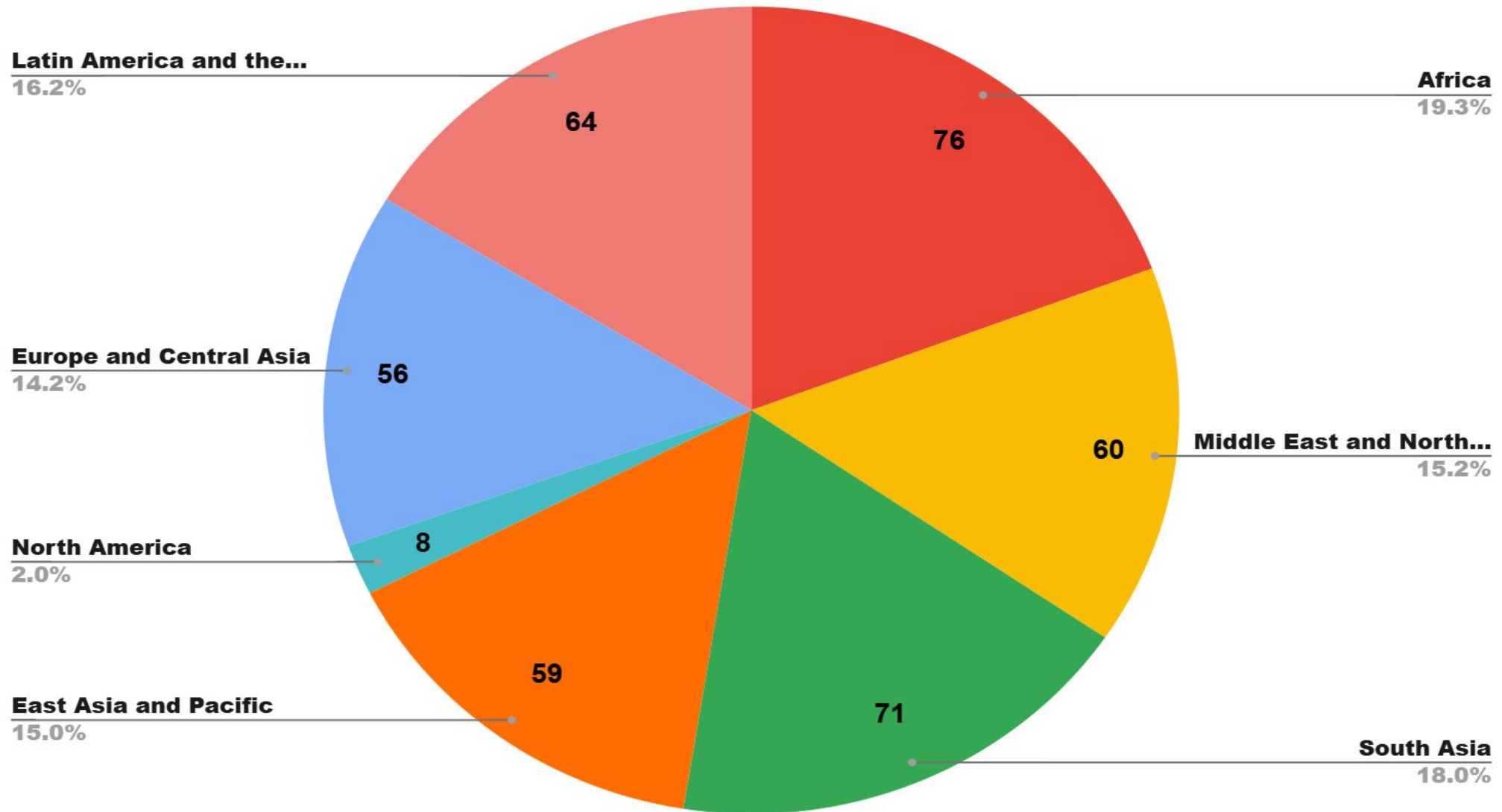
Partnership Engagement

This section presents an analysis of GRP's partner statistics — including where our partners are based and the types of organisations represented in the network. It provides a snapshot of our collective reach and diversity, helping us better understand who is in the GRP network and how we can tailor engagement moving forward.

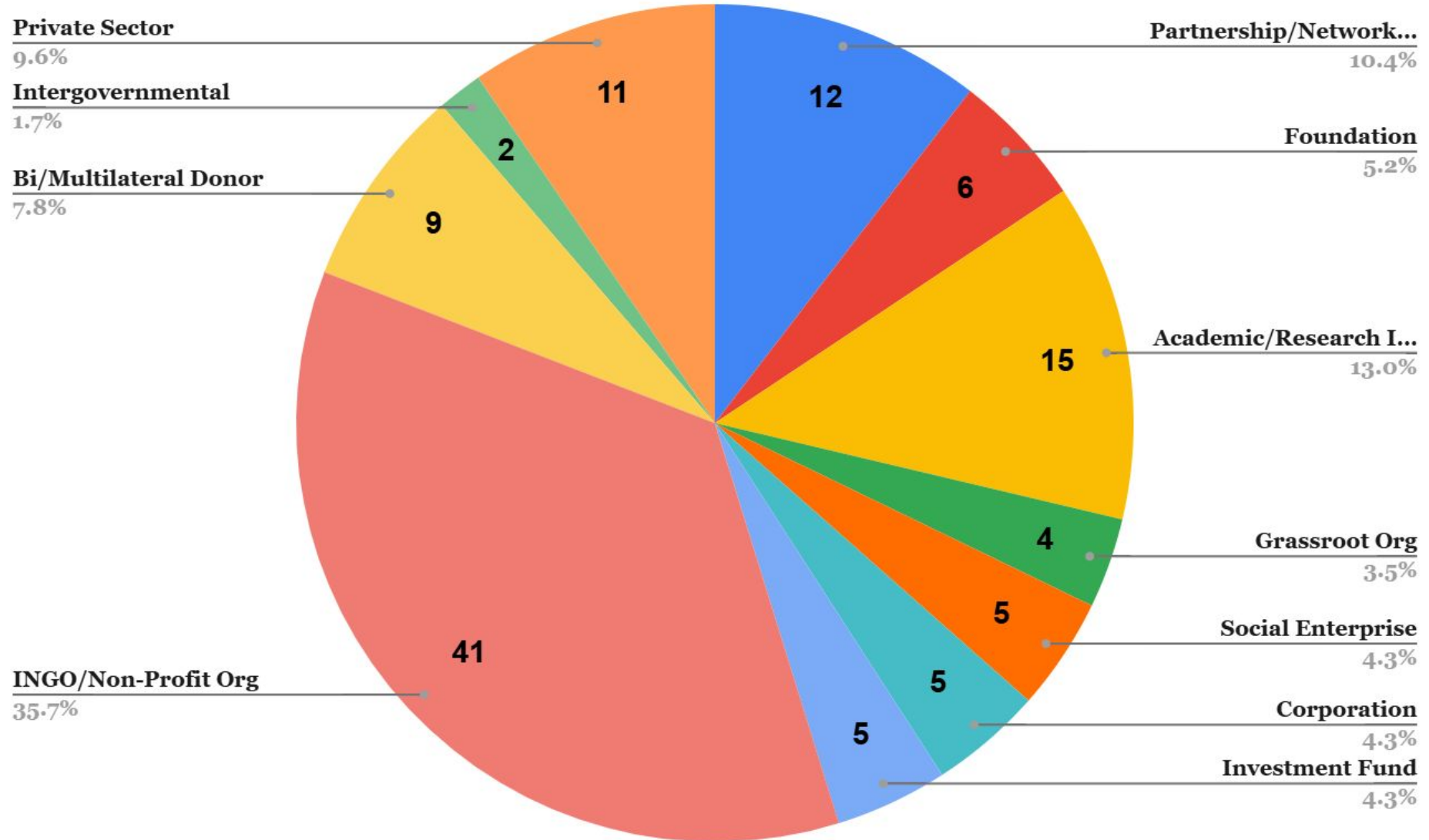
This section highlights key findings from our latest GRP partner feedback and check-in. We've gathered input on what's working well, where there's room to grow, and how we can better collaborate as a network moving forward.



Where our partners work



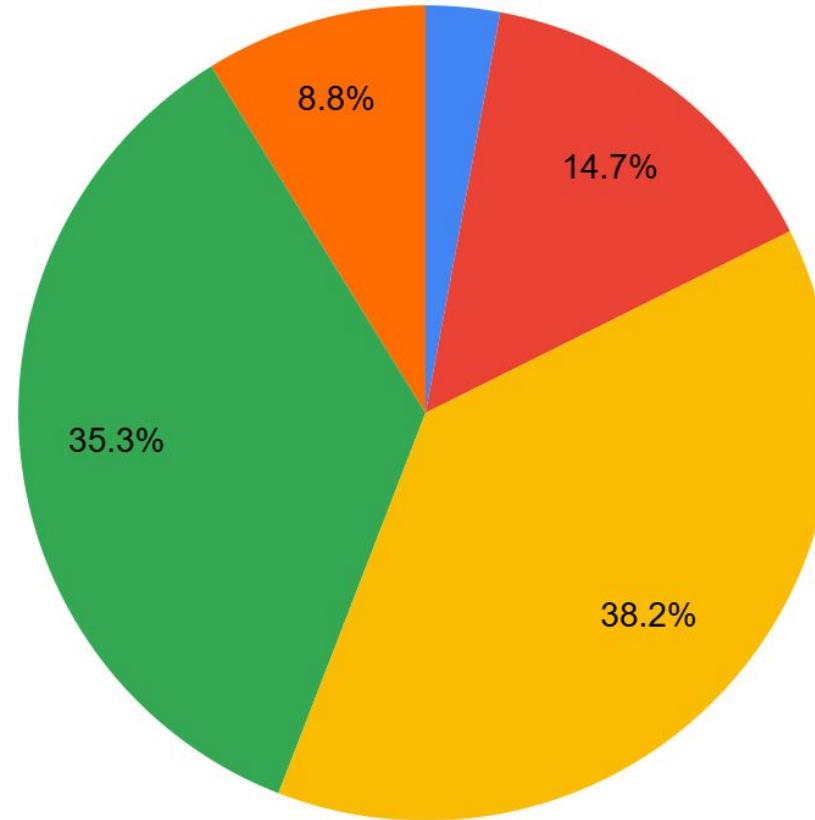
Partners organisation category



The main opportunity that engaging or collaborating with GRP offers?



- Accessing to newsletters
- Advocacy and policy efforts (such as specific campaigns, policy dialogues, key milestones such as COP)
- Collaborating on funded projects and programmes (such as innovation challenge funds)
- Exposure to peers and networking
- Knowledge products and key brokering efforts (such as white papers, peer reviewed studies, key reports)



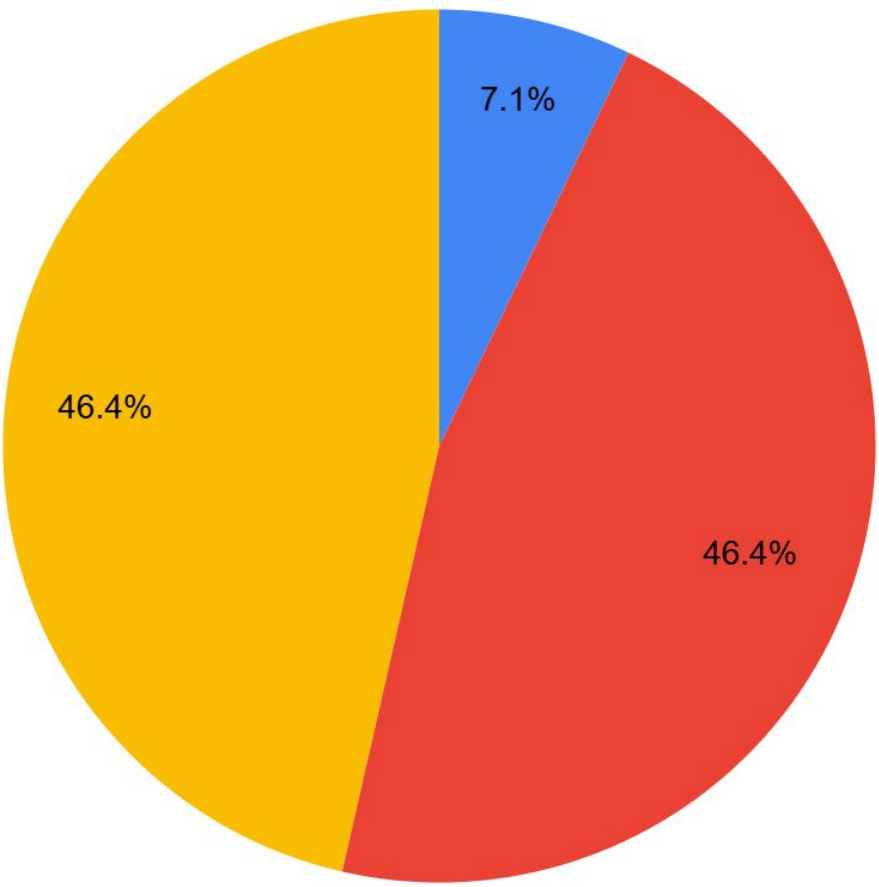
"GRP offers a meaningful and action-oriented platform where a diverse set of actors come together to drive real, measurable progress on climate resilience —avoiding the trap of becoming just another ‘talk shop’ with little follow-through or hard conversations."

-BRAC



Are you currently engaged in any programmes or projects in the Partnership?

- No, and we don't currently have capacity to collaborate
- No, but we would like to collaborate
- Yes, we are currently collaborating on one or more programmes or projects

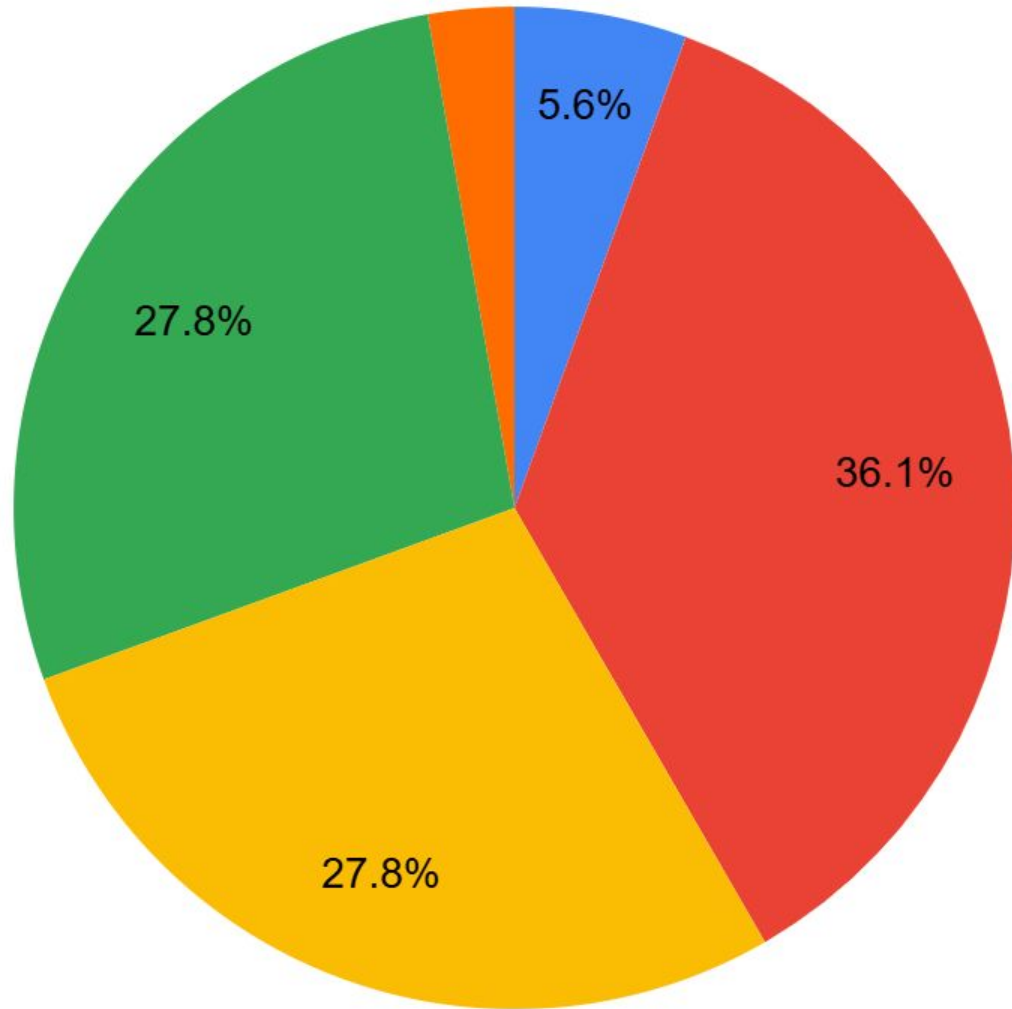


“The support from GRP has been satisfactory. We welcome more opportunities for collaboration, outreach, and resource sharing across the network, as we see these as critical to advancing climate resilience and strengthening meaningful relationships with peer organizations and funders.”
- Near East Foundation (NEF)



What is the main barrier or challenge to engaging or collaborating with GRP?

- Different strategic priorities for my organisation
- Lack of funding for collaboration
- Lack of staff capacity
- Lack of tangible opportunities to collaborate
- there is no barrier



"Overall, our engagement with GRP has been positive—marked by responsiveness and valuable support. There's an opportunity to deepen this collaboration further by enhancing direct engagement opportunities and improving the flow of communication across the network."

- GAYO

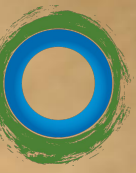
Partner Engagement calendar



- **Ask Me Anything-** Partners are invited to join the secretariat meeting first Tuesday of every other month- Jul, Sept, Nov. Calendar invites will be sent.
- **Quarterly Email updates** - to inform Partners about ongoing developments and initiatives.
- **Partner spotlight sessions** - opportunity for partners to share their work and get input or feedback. Slots available for partners to express interest
- **Partner content amplifying-** Amplify partners work on GRP social media twice a month
- Partners to share content with GRP through ikimaiyo@globalresiliencepartnership.org



Q&A



Breakout Groups

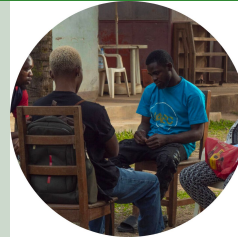
Get in touch



Innovation Challenges

Gerald David

[gdavid@globalresiliencepartnership.org](mailto:g david@globalresiliencepartnership.org)



Partnership Engagement

June Kimaiyo

[jkimaiyo@globalresiliencepartnership.org](mailto:j kimaiyo@globalresiliencepartnership.org)



Resilience Science Must-Knows: A Road to Action for Decision-Makers

Cibele Queiroz Cibele.Queiroz@su.se



Private Engagement

Julia Cadaval Martins

jmartins@globalresiliencepartnership.org



Resilience Hub

Sarah Clarke

sclarke@globalresiliencepartnership.org



South to South Resilience Academies

Julia Van Velden

juliavanvelden@sun.ac.za