

A close-up photograph of two hands, one above the other, holding a large quantity of yellow beans. The hands are dark-skinned, and the background is a blurred, warm-toned surface. The text 'GLOBAL RESILIENCE PARTNERSHIP' is overlaid in large, white, bold, sans-serif capital letters on the left side of the image.

# GLOBAL RESILIENCE PARTNERSHIP

Annual Action Report

---

**2024**



”

Collaboration is not just a strategy, it's an essential in today's complex resilience landscape. At GRP, we believe that when communities, innovators, funders, civil society, private sector and policymakers work together, we unlock transformational change. This partnership represents our shared urgency to build resilience where it matters most—on the frontlines of climate, and inequality—and reaffirms our commitment to scaling solutions that are inclusive, locally led, and nature-positive.

**Jesper Hornberg**

CEO, Global Resilience Partnership

”

The partnership has been more than just a strategic alliance—it's been a shared values based mission. In a world where climate shocks are intensifying, GRP stands out for its commitment to shifting power, enabling locally led action, and investing in solutions that are both just, grounded and scalable. Being part of this partnership means being part of a movement that is changing how resilience is built—from the ground up anchored in justice.

**Shehnaaz Moosa**

Director, SouthSouthNorth and Chair of GRP Advisory Council



## Table of Contents

About the Partnership.....	3
2024 at a Glance.....	5
How we work.....	6
Transforming food and financial systems.....;	8
Scaling innovative formal-informal collaborations..	11
Increasing inclusive transdisciplinary learning.....	14
Embedding resilience in private sectors.....	18
Insights from our Partners.....	20
Our 2025 Collective Commitment .....	21

# About the Partnership

GRP is made up of over **90 organisations** working together to **advance resilience** by identifying and scaling locally-led **innovations**, sharing and generating **knowledge**, and shaping resilience **policy** and investments. Our vision is an inclusive world in harmony with nature, better prepared to cope with shocks, adapt to change, and transform—all within planetary boundaries.

GRP's collaborative model is grounded in trust, equity, and shared learning. It enables collective problem-solving, ensures diverse voices are heard, and breaks down silos to accelerate progress toward just, climate-resilient development. GRP facilitates meaningful engagement across the resilience community, supporting Partners to co-create knowledge, drive innovation, and influence decision-making at multiple levels.

GRP continues to be recognised as a key convener in the resilience and development space, bringing together a diverse network of organisations to develop solutions grounded in local contexts and contributing to global learning. The Partnership enables cross-sector collaboration and learning, knowledge exchange, and action. Partners engage where they see a good fit—whether by supporting innovation challenges or leveraging GRP's broad network to amplify their work.



GRP provides a significant and useful platform that a diverse set of actors and stakeholders use to take real, measurable action in the climate arena - where tough conversations are had and / or meaningful actions are taken.

**Ashley Toombs**  
Head, Climate Hub BRAC international





# 2024 at a Glance

Founded in  
**2014**

Partners  
**90+**

Mobilised over USD  
**3,000,000+**

**160**  
Knowledge products  
and events generated

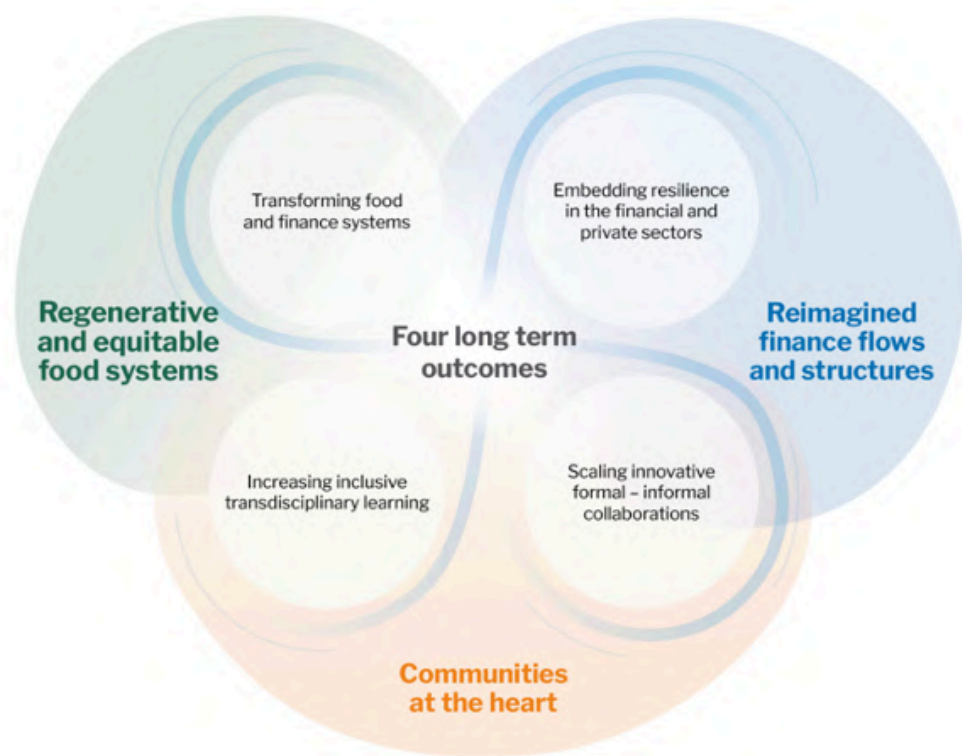
**35,000+**  
Knowledge users

**40,000+**  
people supported



# How we work

GRP's work is structured around four interlinked outcomes that guide our collaborative efforts to build resilience and transform systems. These outcomes reflect our strategic priorities and help frame the contributions of our Partners.



## 1) Transforming Food and Financial Systems

We support local innovators and entrepreneurs—especially youth and women—to scale context-specific food and financial solutions that strengthen resilience at the ground level.

## 2) Scaling Innovative Formal–Informal Collaborations

We help connect formal institutions with informal systems and communities to deliver more equitable and locally-led climate action, especially in vulnerable urban settings. GRP also plays a convening role in global policy arenas, ensuring that resilience priorities and local perspectives are heard and reflected in decision-making spaces.

## 3) Increasing Inclusive Transdisciplinary Learning

We create space for diverse actors to learn from one another, reflect, and share knowledge that informs resilience practice and policy. This includes brokering dialogue, facilitating transformative learning for resilience professionals, and centring the perspectives of young people and women.

## 4) Embedding Resilience in the Private & Financial Sectors

We engage with private sector actors to integrate resilience into their strategies and investments, unlocking innovation and finance for adaptation.





# 1. Transforming food and financial systems

Restructuring food systems and nurturing resilient entrepreneurship in fragile regions.

Despite growing recognition of the need for resilient food and financial systems, existing mechanisms for mobilising finance and knowledge resources remain insufficient. With funding becoming more uncertain, there is an urgent need to boost collaboration and access to resources. GRP plays a key role in providing both innovation and financing opportunities, particularly for social enterprises and local organisations advancing climate resilience.

In 2024, GRP helped mobilise USD 3,058,764 in funding, playing a catalytic role in unlocking resources for locally driven, innovative resilience projects. Through flexible funding windows—such as challenge funds and innovation awards—and investor forums, GRP offers accessible support that allows partners to test new ideas, scale effective solutions, and strengthen their institutional capacity.

Results in 2024 of the **Resilient Agriculture Innovations for Nature (RAIN 1)** challenge:

- US\$700,000+ mobilised
- 18,000+ people supported GRP-supported innovations
- 60+ organisations supported
- 1,200+ applications received
- 2,500+ individuals trained

Leadership academies and ongoing mentorship have strengthened the RAIN grantees' models, teams, and networks, enabling grantees to scale seed-level, innovative nature-positive agricultural solutions. During the 2024 Climate Week NYC, we organised an investor forum where three RAIN 1 winners pitched their projects to potential funders.







Launched in December 2023, the **RAIN 2 Innovation Challenge** focused on scaling youth- and women-led solutions in agricultural resilience and nature-positive development. 23 shortlisted projects from East Africa received mentorship and participated in a Leadership Academy. Six non-profit initiatives focused on young and gender-diverse innovations were awarded seed funding to implement their locally rooted solutions. All 11 winning projects will continue receiving mentorship and visibility through 2025, advancing GRP's goal of fostering inclusive innovation ecosystems.



Additionally, as part of our **Seeds of Resilient Food Systems** research initiative, GRP studied 19 RAIN 2 shortlisted projects to identify lessons from locally-led agricultural innovations, with the goal of understanding how local innovations funded by the RAIN challenge can contribute to systemic transformation towards more sustainable and equitable food systems in East Africa.

GRP, in collaboration with UNDP and GEF, implemented the Resilience for Peace & Stability Innovation Grant Programme in partnership with the Near East Foundation (NEF) in Sudan and Mountain Harvest in Uganda. NEF supported over 3,000 members—75% of them women—across 13 cooperatives to produce non-timber forest products and access community-based microfinance, benefiting 17,000 people and improving productivity on 8,500 hectares.



Photo credit: Near East Foundation, Women Savings group

Mountain Harvest worked with 1,042 smallholder coffee farmers to promote regenerative agriculture, connect to specialty markets, and provide over US\$2.2 million in payments and microloans, enhancing productivity and women's economic empowerment. The Initiative, as highlighted in an independent **evaluation report**, demonstrated that blended finance, adaptive programming, and local partnerships can drive impact in volatile settings, supported by gender inclusion, and strong entrepreneurial ecosystems.

”

The support from GRP has been strong and meaningful. We look forward to more opportunities for collaboration, outreach, and shared learning across the network. These connections are vital for advancing climate resilience and forging impactful relationships with peer organisations and funders alike.



**Garrett Quade**

Programme Officer, Near East Foundation

GRP also provided programmatic support to the **Ocean Risk & Resilience Action Alliance (ORRAA)** through contributions to the development of ORRAA's Innovation Strategy, leadership programming, and investment forums. ORRAA's transition to full independence represents a successful case of scaling through strategic incubation, and GRP will remain a committed partner within the Alliance to advance coastal resilience finance.



## 2. Scaling innovative formal-informal collaborations

Facilitating collaborations between formal and informal stakeholders for inclusive and equitable resilience outcomes

Despite the rising urgency of climate risks in cities, just 1.2% of urban climate investments go toward adaptation and resilience. GRP is working to shift that reality by creating inclusive spaces where communities are seen and supported as the true experts in resilience. GRP is bringing together knowledge, technology, and lived experience to tackle climate vulnerabilities in urban informal settlements—ensuring that solutions are not just innovative, but rooted in community leadership.

The **Roof Over Our Heads (ROOH)** campaign brings together grassroots actors, academic institutions like KRVIA and SEEDS India to pilot climate-resilient housing solutions in informal settlements.

ROOH engaged 109 local artisans and community members across India in hands-on training in affordable and sustainable construction techniques. A Teachers' Training Programme was introduced to embed climate resilience into architecture curricula, and launched the 2024 Design Innovation Challenge to inspire scalable, student-led housing upgrades.



The **Resilient Planet Initiative (RPI)** is a digital platform that connects communities, businesses, and cities with actionable climate risk data, resilient solutions, and peer-to-peer collaboration to drive effective adaptation strategies. RPI brought together partners, including the **Stockholm Environment Institute, Oxford University, SPARC, SDI Kenya, CR2 University of Chile,** and **ONA**, and collaborated closely with the **Race to Resilience campaign** and urban informal settlement women leaders. This partnership-driven initiative stands as a powerful example of how cross-sectoral collaboration can bridge the gap between innovation and community needs, ensuring that climate resilience tools and knowledge are accessible to those most affected by climate risks.

GRP led targeted efforts to identify scalable urban resilience innovations and build an ecosystem that supports locally driven solutions. One key output was the policy and investment briefing note **From Informality to Impact: The Untapped Potential of Scaling Urban Resilience Innovation in Informality**. The report filled a critical evidence gap by mapping current resilience solutions led by non-state actors, analysing their financing pathways, maturity levels, and barriers to scale.

GRP plays a vital role in shaping policy by championing inclusive and systemic approaches to resilience ensuring regional and local actors are given voice and empowered to influence resilience action at regional and global level. Through the **Resilience Hub**, we have established ourself as a central convening platform for climate adaptation and resilience, especially at global events like COPs. Since COP26, the Resilience Hub has positioned itself as a driver of inclusive, systemic resilience. The Resilience Hub at COP29 in Baku, Azerbaijan, reinforced its role as the central convening space for advancing climate adaptation and resilience.



In 2024, the Resilience Hub strategically expanded its engagement footprint throughout the year. Key events at **London Climate Action Week** and **Climate Week NYC** served as global milestones to surface progress, reinforce political will, and support participation of regional and grassroots actors in global platforms.



Photo: Anastasiia Gornostai, COP Resilience hub

To address fragmentation in how resilience and adaptation are discussed—and acted upon—within the UNFCCC process and beyond, GRP strengthened its collaboration with the UN Climate Champions to advance the Mainstreaming Resilience pillar of the Race to Resilience (RtR) campaign.

As co-lead of the **Sharm El-Sheikh Adaptation Agenda Informality Working Group**, GRP supported in shaping the **SAA Implementation Report**, curated campaign-aligned sessions at the Resilience Hub and championed gender-responsive approaches in informal urban settings. Our leadership in the Marrakech Partnership and participation in the **Impact Makers** Steering Committee supported the alignment of community-driven innovations with global resilience goals.









### 3. Increasing inclusive transdisciplinary learning

Brokering dialogues, transformative learning for resilience professionals and centering young people's perspectives.

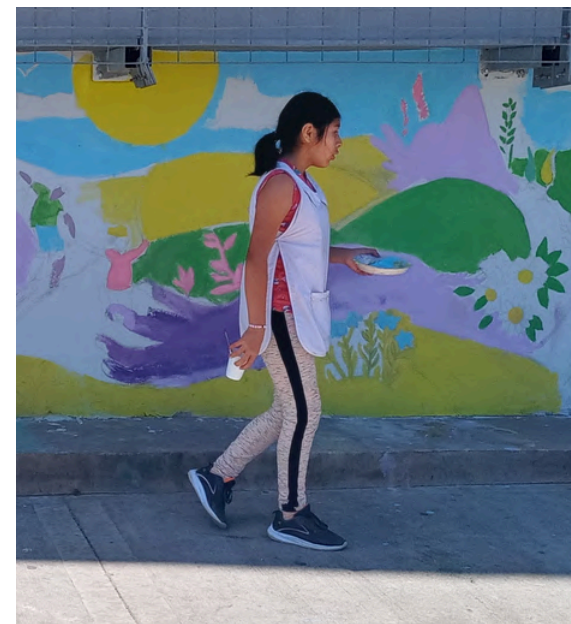
While interest in co-creating and sharing technical knowledge, success stories, and lessons learnt is growing across the resilience community, much of this knowledge remains siloed, efforts risk duplication and remain out of reach—particularly for those on the frontlines of climate risk. GRP helps shape learning ecosystems that bridge science, policy, and grassroots practice—ensuring that resilience strategies are informed by diverse voices and grounded in lived experience. Expanding youth and women engagement remains a core priority for GRP, ensuring their voices influence climate and development finance spaces.

In 2024, more than 830 people engaged with 13 events and four knowledge products co-developed by GRP and members of the **Resilience Evidence Coalition**—a 1,700-member-strong community of practice hosted by GRP and co-led by **Climate and Development Knowledge Network** and **International Centre for Climate Change and Development**. This coalition brought together diverse actors including researchers, practitioners, policymakers, and funders to strengthen evidence-based action on climate resilience. The coalition played a key role in shaping the **Regional Resilience Hub** leading a two-day virtual summit and a **synthesis report** that captured and highlighted key messages from regionally led engagements.



Through the coalition, GRP plays a pivotal role in driving systems change by bridging the gap between evidence and policy action empowering organisations to produce and apply evidence that directly influences communities, policy, and systems. The **Knowledge Into Use (KIU)** Awards championed creative, arts-based approaches that surface and translate resilience knowledge. The 2024 awards celebrated innovative initiatives from India, Indonesia, and Argentina—including **Climate Recipes**, **Plant Music**, and **climate murals**—each supported through a **mentorship** programme designed to enhance the impact and reach of their work. In addition, GRP partnered with **Green Africa Youth Organisation (GAYO)** on a photo story contest amplifying African youth voices on resilience in the lead-up to COP29. This initiative enabled 5 young people to share their climate resilience narratives through powerful visuals and storytelling, with **Winning photo stories** from Ghana, South Africa, and Uganda showcased widely to inspire action and highlight youth leadership.

GRP amplifies the voices of underrepresented actors, including local communities, youth, and civil society organisations, through platforms such as the **Global South Talent Pool**, innovation challenges, GRP and Partner events (e.g., Resilience Hub events and Gobeshona), and youth-led storytelling. In 2024, GRP selected **four young professionals** from almost 1,300 applications spread across 68 countries who received personalised mentorship, contributed across multiple workstreams, and deepened their expertise in climate resilience while building valuable networks.



Photos: Silvana Marchetti, Mural, Knowledge into use 2024 Winner Instituto Internacional de Medio Ambiente y Desarrollo – IIED América Latina



Photo: Southern African Resilience Academy (SARA) workshop in Stellenbosch, South Africa, 2024

GRP facilitates peer-to-peer learning and collaboration across the Global South, ensuring that solutions are rooted in local realities while contributing to global resilience discourse. Through the collaboration with the Centre for Sustainability Transitions (CST) at the University of Cape Town, GRP facilitated the **South African Resilience Academy (SARA)**.

From **2022-2023**, SARA convened eight working groups focused on “Equitable Resilience”, producing a wide range of knowledge products, including policy guidance notes, toolkits, methodological guides, and locally grounded initiatives such as WhatsApp campaigns. Building on this momentum, a second round of working groups was launched in 2024 under the theme “**Transformative Pathways to Resilient and Sustainable Futures**”.

”

GRP has been an engaged and collaborative partner, facilitating deeper collaboration by embedding a CST team member within their knowledge team. This has really streamlined our understanding of GRP’s priorities and processes, making our work together much more effective.



**Julia Van Velden,**  
Researcher, Centre for Sustainability  
Transitions (CST)









Photo: Panel discussion from the Resilience Day at Climate Week NYC - Cameron Burton

## 4. Embedding resilience in the private and financial sectors

Supporting a wider diversity of financial actors to embed resilience as part of strategies, operations, and reporting

Despite growing recognition of climate risks and the significant business case for resilience, investment in adaptation remains critically low. The estimated annual need for adaptation investment is **\$200 billion**, yet current funding levels are less than one-third of this amount. Approximately one-third of this financing gap lies in sectors that have potential for private financing, such as those in market sectors including commercial agriculture, water and infrastructure. Although companies are increasingly investing in long-term, responsible initiatives like ESG projects, climate resilience has yet to be fully integrated into mainstream business strategies and investment models. Without clear pathways for private sector engagement, the opportunity to close the adaptation finance gap and support scalable, locally led solutions remains underutilised. GRP Integrates resilience into corporate strategies while reflecting the latest evidence on sustainable development and climate adaptation.

GRP strengthens the business case for resilience by partnering with leading global business schools to nurture a new generation of business leaders equipped to embed climate adaptation and resilience into their decision-making. Since 2022, GRP has built strategic collaborations with six top institutions—Yale School of Management, IMD Business School, Saïd Business School (Oxford University), Cape Town Graduate School of Business, Asia Institute for Management, and ESMT Berlin—under the **Mobilising Business Schools for Adaptation (MBA) initiative**. In 2024, through a partnership with UNDP, GRP provided 45 business school students with internships with Adaptation Fund Climate Innovation Accelerator (AFCIA) grantees across the Global South. These interns provided technical assistance on resilience-related deliverables, offering fresh perspectives and business acumen to support and strengthen locally led adaptation initiatives.

Through its role as USAID's implementing partner for the PREPARE Call to Action, GRP supported 39 companies across climate-vulnerable countries with a suite of demand-driven services, including knowledge brokering, strategic communications, and monitoring and evaluation. These efforts helped embed resilience thinking into business planning, operations, and reporting, while also strengthening the business case for investing in climate adaptation.



Photo: Jjumba Martin, coffee beans storage



Photo: Women's group members awarded certificates by Itanya Africa Group after completing training in regenerative agriculture and syntropic agroforestry.



# Insights from our Partners

Our partners value events as key opportunities for engagement, highlighting forums like the Resilience Evidence Forum, Resilience Hub events, and various online gatherings as crucial for connecting with peers, sharing their work, and increasing visibility. There is a shared desire for more dynamic, participatory interactions during these meetings.

There is strong interest across the partnership in expanding co-fundraising, co-creation and sharing of technical knowledge products, success stories, and lessons learned. With the funding uncertainty, partners call for more co-funding options—like joint proposals and pooled funds—to boost collaboration and support resilience projects. Partners see peer learning as key to building capacity and collaboration, but call for more accessible, structured knowledge exchange to improve alignment, innovation, and impact.

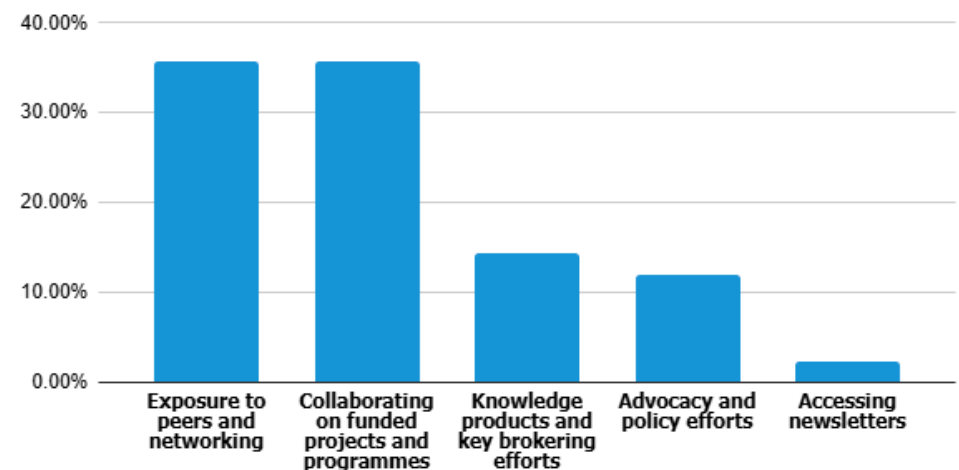
As the partnership expands, partners recognise the critical need to strengthen monitoring systems to effectively capture, validate, and communicate the full scope of our collective efforts. This will involve continued efforts to develop and implement effective reporting mechanisms, such as the annual partner check-in and feedback survey. These tools will help track progress, highlight successes, identify gaps, and ensure transparency.

A majority of partners are extremely satisfied with GRP's support, collaboration, and communications, with all others reporting satisfaction.



Photo: Alice Muthoni

What Partners Value Most in Collaborating with GRP





# Our 2025 Collective Commitment



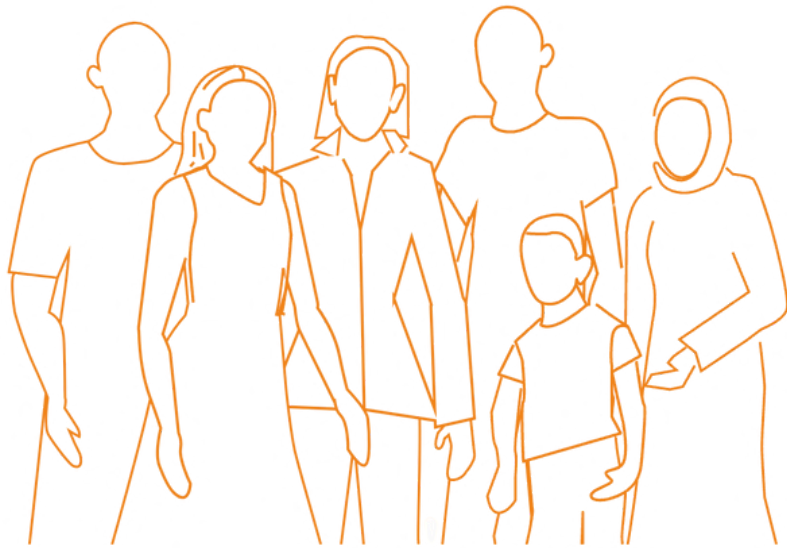
Photo: Anastasiia Gornostai, COP Resilience hub

In 2025, the partnership is committed to deepening impact, strengthening partnerships and creating lasting value for the resilience community.

## Key programmes/activities

- **Resilience Hub Events:** We will continue to convene meaningful and action-oriented Resilience Hub events across key platforms, amplifying diverse voices—especially from the Global South—and translating grassroots knowledge into global influence.
- **Resilience Science Must-Knows: Road to Action for Decision-makers:** This initiative ensures the best available science on resilience is accessible and actionable for decision-makers, by synthesising key insights and co-creating adaptable, context-specific frameworks. Launching at COP30.
- **Innovation Challenges:** We will continue to identify, support, and scale locally-led and youth and women-driven resilience innovations through RAIN, Resilience Innovation through Scaling Entrepreneurship (RISE) Urban challenge, the Hindu Kush Himalaya Innovation Challenge for Entrepreneurs, and potentially, look to launch technology and nature challenges.
- **South to South Academies:** From 2025-2027, SARA will support eight working groups to synthesise knowledge under the general theme of “Transformative pathways”. GRP is co-developing a Latin American Resilience Academy to extend this South-South learning model and address the region’s unique resilience challenges.

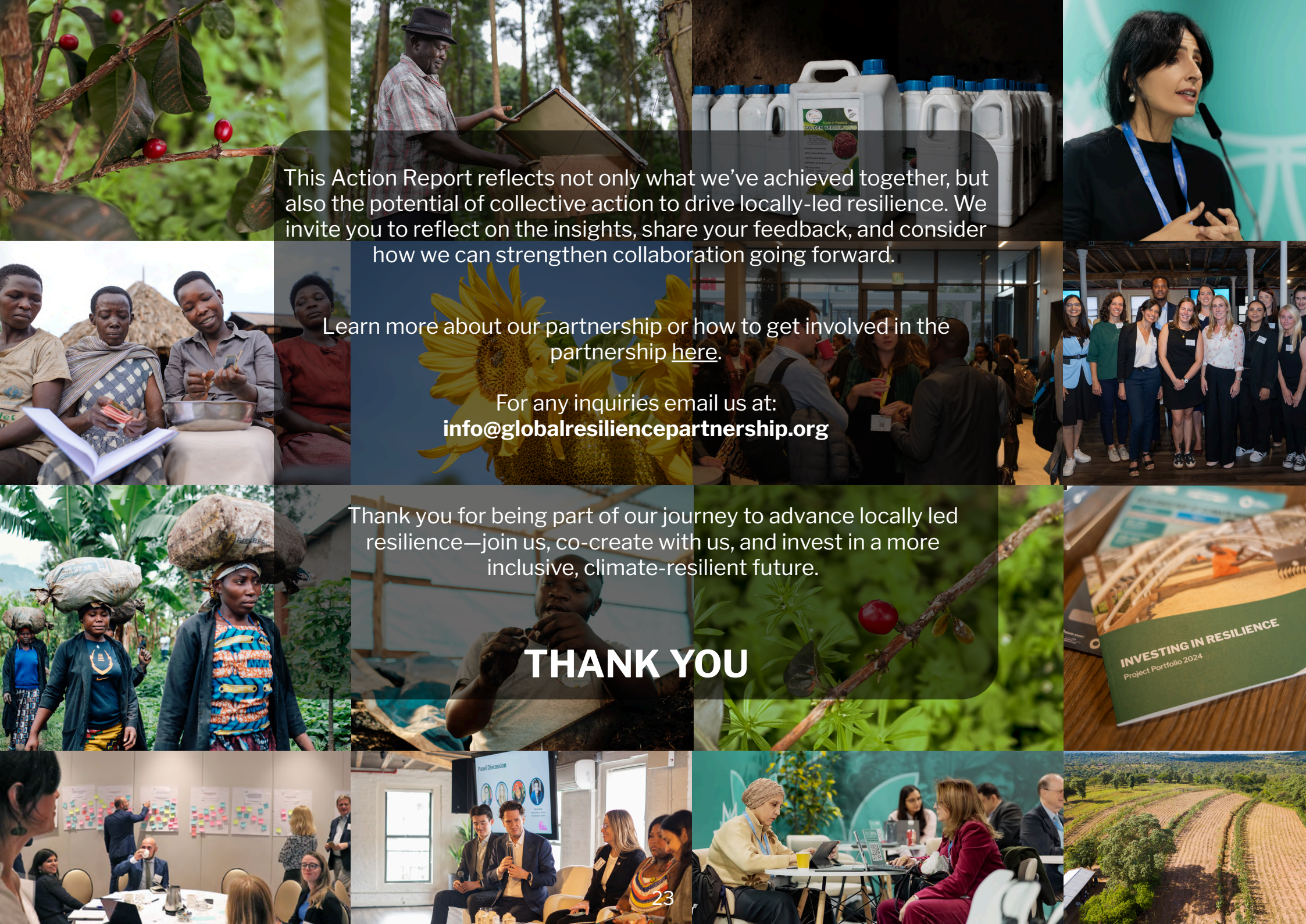
GRP will strengthen its regional presence by partnering with local organisations to help communities access finance, shape policy, and engage in global processes.



By co-creating knowledge, programming, and proposals with partners, GRP will focus on joint fundraising and collaborative efforts to scale impact and align resilience goals across regions.







This Action Report reflects not only what we've achieved together, but also the potential of collective action to drive locally-led resilience. We invite you to reflect on the insights, share your feedback, and consider how we can strengthen collaboration going forward.

Learn more about our partnership or how to get involved in the partnership [here](#).

For any inquiries email us at:  
**[info@globalresiliencepartnership.org](mailto:info@globalresiliencepartnership.org)**

Thank you for being part of our journey to advance locally led resilience—join us, co-create with us, and invest in a more inclusive, climate-resilient future.

**THANK YOU**



A close-up photograph of two hands, one above the other, holding a large quantity of yellow beans. The hands are dark-skinned, and the right wrist is adorned with a metal watch. The background is a blurred, warm-toned surface, possibly a wall or a large container of beans. The text 'GLOBAL RESILIENCE PARTNERSHIP' is overlaid in large, white, bold, sans-serif capital letters on the left side of the image.

# GLOBAL RESILIENCE PARTNERSHIP

## *Advancing Resilience*

GRP is made up of 90+ organisations that have joined forces to advance climate resilience. We believe that resilience underpins sustainable development in an increasingly unpredictable world.

GRP is registered as a non-profit organisation in South Africa and is a programme at the Stockholm Resilience Centre at Stockholm University.

**[www.globalresiliencepartnership.org](http://www.globalresiliencepartnership.org)**

