



Resilience Innovation *Challenges*

Investing in locally-led innovations that advance resilience
2026 PORTFOLIO OVERVIEW AND PARTNERSHIP OPPORTUNITIES



GLOBAL
RESILIENCE
PARTNERSHIP



About Us

The **Global Resilience Partnership** brings together 90+ partners working towards a resilient world at the intersection of climate, development, and humanitarian action.

Together, we translate resilience science and innovation into policy and investment.

AT A GLANCE

>US\$45m

invested in resilience building since 2014

102

innovation solutions implemented in over 30 countries

>7m

people supported through our innovation solutions

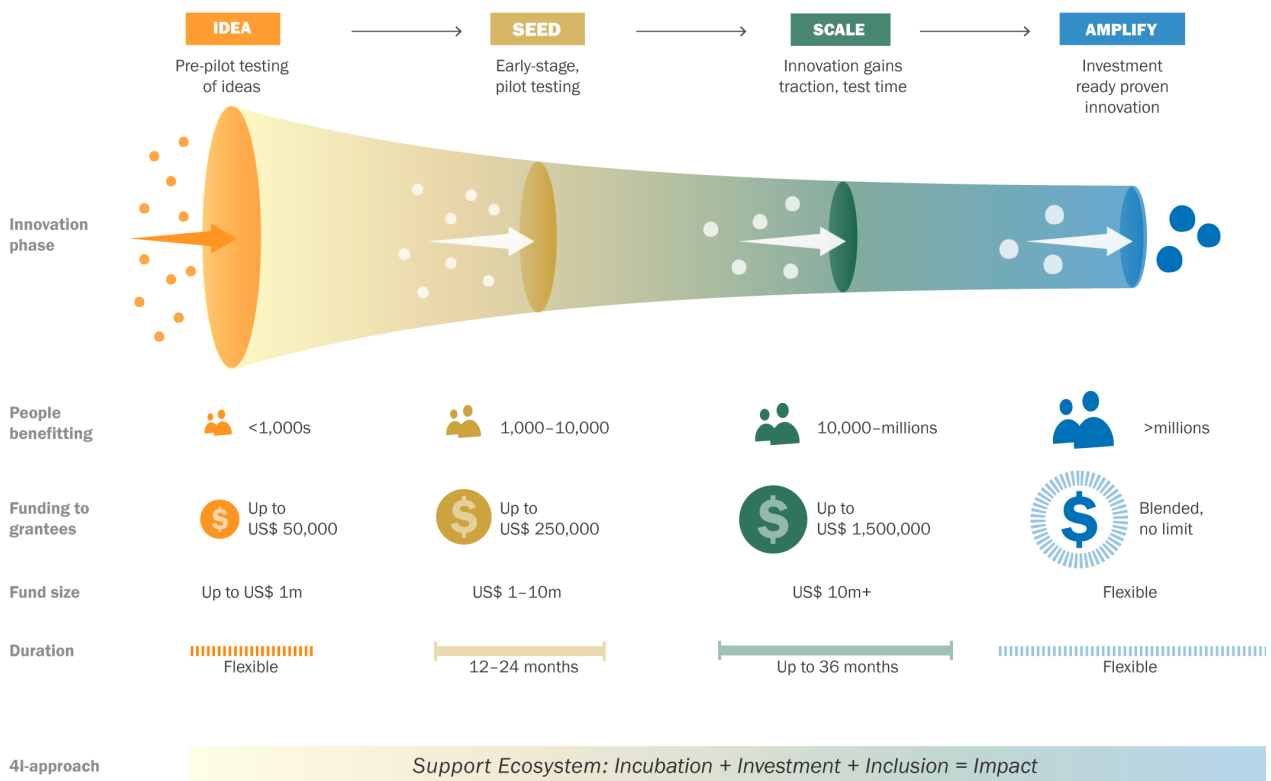
Photo credit: Kingdom Essences, Innovation Challenge grantee

Our Innovation Challenge model

We are the only global partnership that has successfully invested >USD 45 million into resilience building.

Our Innovation Challenges promote the emergence of transformative solutions from the bottom-up. This approach differs from conventional funding processes as applicants have a large degree of freedom in designing innovative solutions to the most pressing problems. Funds are focused on outcomes and the implementation pathways are not prescribed.

We have identified four stages: **Idea** (funding up to ~\$50k to test concepts), **Seed** (up to ~\$250k to validate and grow solutions), **Scale** (up to ~\$1.5m to test and expand impact), and **Amplify** (investment fund graduation, no funding limit).



Most early-stage innovations fail, but our innovation approach is built to take the most promising ideas to scale. Promising teams are progressively filtered and supported through multiple rounds – ensuring we double down on the best ideas. This approach provides a pipeline of investment-ready projects for resilience.

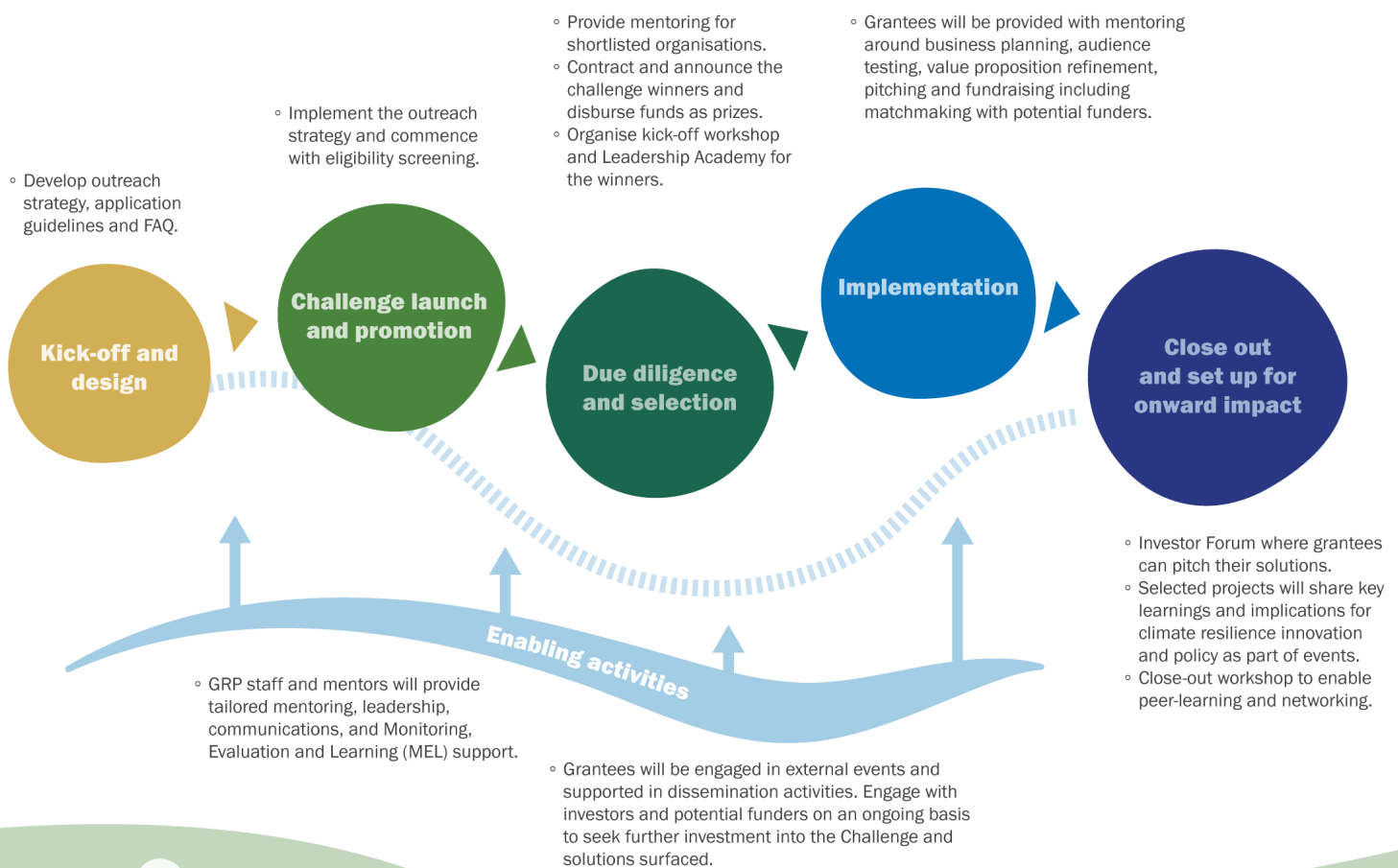
Our approach manages risk and maximizes returns: invest small at idea stage, then concentrate larger resources on those that prove effective.

Creating an enabling environment

Our Innovation Challenges offer financial and tailored non-financial support.

All submissions go through a selection process aimed at uncovering the most impactful innovative solutions. Weaving together our Innovation, Knowledge and Policy work areas, we design Challenges that ensure communities and ecosystems become a catalyst for resilience.

Our Innovation work raises investments, engages and mobilizes the private sector, and accelerates financial flows to local actors. Our Policy work allows us to bring voices and experiences of local actors to global policy making processes in fora such as the UNFCCC COPs where GRP is the founder and lead managing partner of the COP Resilience Hub. Our Knowledge work is based on co-production where we connect local innovators with researchers to jointly advance knowledge and, in turn, to shape policy and investment.



Incubate

Assessment, mentoring and leadership support for locally led innovations.

Invest

Tailored seed, scale and amplify investments into impactful resilient solutions.

Inclusion

Foster equitable participation, empowering diverse voices to lead and drive innovation.

Impact

Amplify learning through knowledge brokering and policy engagement.

Beyond Funding

Our innovation challenge model has a built in comprehensive eco-system that offers various support services and benefits.



Our portfolio

42

RAIN Idea stage innovation solutions that have completed implementation, with a **5x investment leverage ratio**

Resilient Agriculture Innovations for Nature (RAIN) Rural Challenge

RAIN identifies and scales innovative nature-positive ideas into sustainable solutions. Supporting entrepreneurs who restore ecosystems, enhance biodiversity, and strengthen conservation efforts is essential to transforming food systems. RAIN aims to identify and back innovations that deliver both ecological and livelihood benefits, providing customised support to maximise impact and connecting them with funders committed to nature-positive transitions. This year we welcome solutions from across the Global South, with dedicated funding earmarked for East African countries.

6

RISE Idea stage innovation solutions currently in implementation

Resilience Innovation in Informality through Scaling Entrepreneurship (RISE) Urban Challenge

RISE focuses on surfacing and scaling innovations that strengthen climate resilience in informal urban settlements across the Global South. Nearly one billion people worldwide live in informal urban settlements, often lacking basic infrastructure and disproportionately exposed to climate shocks. RISE identifies and scales practical, locally led solutions from grassroots groups, urban start-ups, and/or social enterprises that address the realities of living and working in informal urban environments.

7

TECH Idea stage innovation solutions currently in implementation

Technology for Evolving Challenges in Humanitarian Contexts (TECH) 4 Resilience Challenge

TECH aims to convert innovative technological solutions and scale them to sustainable initiatives. TECH is aimed at identifying applications of Artificial Intelligence (AI) that can enhance or optimise the delivery and provision of humanitarian preparedness and response programmes, enabling faster, more targeted, and anticipatory action. This year we have earmarked funding for TECH4Nature solutions, with a particular interest in solutions from South East Asia.

*“The evaluator has a **very positive assessment** of the overall project implementation and coordination, both the project executing partner GRP and all project partners involved. After having evaluated a large number of GEF projects around the world, **this project is considered as an example for others**. It is very impressive that the project has been able to reach its targets on time with a small budget, while working in fragile countries.”*

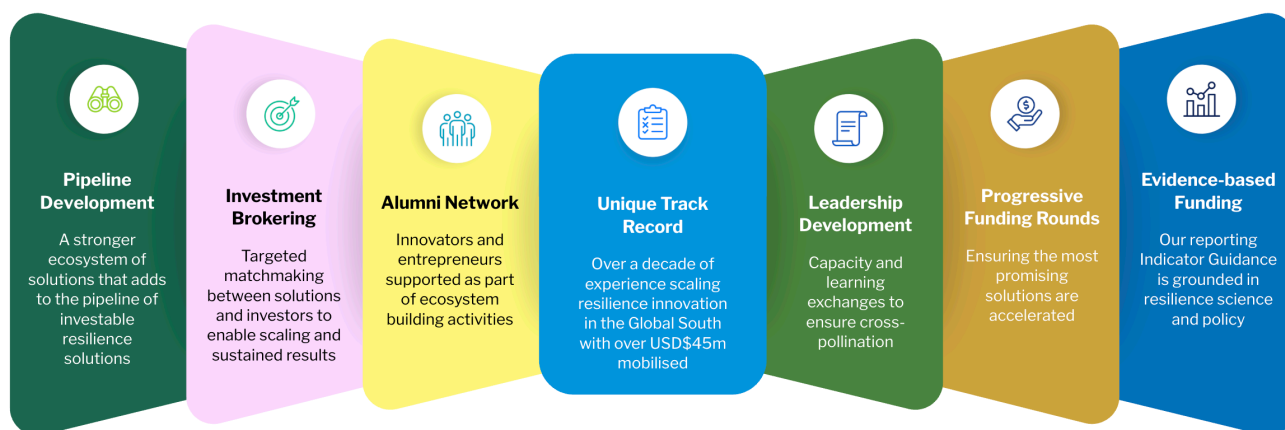
— Extract from the Terminal Evaluation of one of our GEF funded innovation projects implemented by Mountain Harvest in Uganda and by Near East Foundation in South Sudan. For more information, please see the project [Terminal Evaluation report](#) and associated [blog](#).

What sets us apart

What makes our Challenge model unique is the ecosystem around it.

GRP incubates innovators and ensures they are investment ready and have access to tailored support. Successful applications receive professional, independent support to clearly define their problem, stakeholders, context, and develop their business case. The process allows for comparison, peer-to-peer exchanges, networking and rigour in assessment processes. Innovators receive mentoring and a Leadership Academy. They receive comms and MEL support throughout, plus access to investor forums and policy platforms. We also onboard successful grantees as full GRP partners. We believe that this intentional and strategic offer is why so many of our projects “graduate” and attract follow-on funding.

Our offer includes:



Grantee spotlight: Strengthening resilience in fragile, and climate-vulnerable regions through enterprise-driven, locally-led models – Mountain Harvest, Uganda

Mountain Harvest’s model boosts productivity and profitability at the farm level by focusing on the promotion of regenerative agricultural practices across over 1,000 farmers. Through our support, Mountain Harvest increased coffee productivity from 0.4kg to 0.65kg of green coffee per tree and trained over 1,000 farmers (over 50% women) in regenerative agriculture. As a farmer-allied intermediary, the company pays farmers 13% to 37% above market rates while supporting them with agronomic training, access to inputs, and microfinance. This integrated approach helps farmers improve yields, manage climate risk, and capture more value from global coffee markets. As a result of our grant, Mountain Harvest secured a \$300,000 commercial loan from Kiva Foundation, as well as investment from Acumen to expand its farmer base to 2,600 by 2028.

Join us – Ways to get involved

We seek to mobilise a diverse and balanced portfolio of funding contributions, tailored to the varying preferences, mandates, and capacities of funders.

Our Innovation Challenges provide a proven platform to identify, nurture, and scale high-potential resilience solutions across diverse geographies and sectors. By joining as a funder, not only do you resource innovators, but shape the global resilience agenda, connect with a broad ecosystem of practitioners, and gain visibility at influential platforms.

Contributions can take different forms: flexible core support, bespoke Challenge funding, Window sponsorship, and Prize sponsorship, all providing catalytic early-stage capital to promising ideas. This tiered approach ensures that every contribution directly supports innovators while positioning funders within a global partnership advancing systemic resilience.

Our innovation work is funded by ShockWave Foundation, MunichRe Foundation, Trafigura Foundation, FCDO / ICIMOD and Sida. We are looking to expand the funder base to implement and scale the Challenge model approach.

Feature	Core Challenge Support (Preferred)	Bespoke Challenge (USD 5m+)	Window Sponsorship (USD 500k-5m)	Prize Sponsorship (USD 10k-500k)
Scope	Supports all Challenges; funds allocated to the most promising solutions	Full bespoke Challenge co-designed	Dedicated window in RAIN, RISE, TECH (geographic/thematic focus)	Targeted Idea-stage prize funding for individual winners
Branding	Logo on GRP Partner page; all Challenge pages and promotions; named newsletters; flagship events	Exclusive branding; logo on bespoke Challenge materials/events; COP/Climate Weeks events	Logo on GRP Partner page and Challenge documents and promotional campaigns	Logo on GRP Partner page and Challenge documents
Reporting	GRP-wide Annual Action Report	Tailored reporting package and joint comms	Semi-annual shared donor reporting	GRP-wide Annual Action Report
Use of funds	75% awards and technical assistance; 20% staff; 5% overhead	75% awards and technical assistance; 20% staff; 5% overhead	50% awards and technical assistance; 40% staff; 10% overhead	75% awards and technical assistance; 10% staff; 15% overhead



**GLOBAL
RESILIENCE
PARTNERSHIP**

Photo credit: Jumbo Martin
Photo description: Watira Bakali inspecting his coffee plantation in Makaali. Farmers in the Makali community work closely with Mountain Harvest, one of our Innovation grantees, to upgrade their product and secure higher prices for their coffee.