

A woman wearing a bright pink sari and a matching headscarf is wading through a river. She is carrying a basket on her head and holding a blue rope. The background shows a steep, eroded bank of grey soil. The text 'GLOBAL RESILIENCE PARTNERSHIP' is overlaid in large white letters on the left side of the image.

GLOBAL RESILIENCE PARTNERSHIP

ANNUAL ACTION REPORT

2025





”

2025 was the year resilience moved to the forefront, in part, forced by changes in the development, climate, and aid sectors. The science is now sharper, the demand from frontline communities clearer, and the appetite from business and finance more concrete than at any point in the partnership's first decade. GRP's role is to make sure these forces meet and that the solutions they produce are locally rooted, equitable, and built to scale.

Jesper Hornberg
CEO, Global Resilience Partnership

”

Our partnership grew from fewer than ten organisations a decade ago to more than ninety today. What holds this community together is not a brand or a budget line, it is a shared conviction that resilience belongs to the people building it, and that our job is to make their work visible, investable, and connected. 2025 deepened that conviction.

Shehnaaz Moosa
Director, SouthSouthNorth and Chair of GRP Advisory Council

Table of Contents

About the Partnership.....	3
2024 at a Glance.....	5
Milestones across the year.....	6
How we work.....	7
Transforming food and financial systems.....	9
Scaling innovative formal-informal collaborations..	12
Increasing inclusive transdisciplinary learning.....	14
Embedding resilience in private sectors.....	16
Insights from our Partners.....	20
Looking ahead	21

ABOUT THE PARTNERSHIP

GRP is a community of more than 90 organisations advancing resilience by identifying and scaling locally-led innovation, generating and sharing knowledge, and shaping resilience policy and investment. Our vision is an inclusive world in harmony with nature, better prepared to cope with shocks, adapt to change, and transform, all within planetary boundaries.

The partnership model is grounded in trust, equity, and shared learning. It brings together civil society, research institutions, the private sector, governments, and grassroots networks to co-create solutions, broker knowledge across silos, and influence the rooms where resilience decisions are made. Partners engage where the fit is strongest, through innovation challenges, joint convenings, research collaborations, or platforms that amplify their work into global policy spaces.



GRP creates a unique space where Partners can come together around a shared commitment to advance resilience. We have seen firsthand the value of approaches grounded in collaboration, collective action, and shared learning. By bringing together diverse perspectives and expertise across sectors and regions, GRP helps foster meaningful connections, amplify local innovation, and strengthen the collective ability to respond to complex challenges.

Margie Brand,
Vikāra Institute Executive Director





PHOTO CREDIT : SOLIDARIDAD

GRP at a glance in 2025

2014

Founded in

82,000+

People supported

51,000+

Knowledge users reached

50+

Knowledge products and events generated

90+

Partner organisations

USD 3.2M+

Mobilised for locally-led resilience

1,800+

Applications across our innovation challenges, from more than 100 countries

MILESTONES ACROSS THE YEAR

Throughout 2025, GRP advanced global climate adaptation by launching key innovation challenges—including TECH4Resilience, RISE, and HKH-ICE 2.0, alongside major international initiatives with partners like the International Finance Corporation (IFC). High-level engagement peaked at the IMF Spring Meetings, London Climate Action Week, and Climate Week NYC, culminating at COP30 in Belém. There, the Peru Resilience Hub hosted over 60 sessions across six thematic tracks, published crucial resilience science, and celebrated pioneering businesses and challenge winners.

March

Global call for proposal

TECH4Resilience and RISE Innovation Challenges

launched in partnership with Trafigura Foundation and Gates Foundation

April

Washington, DC

Resilience Hub event at the IMF Spring Meetings

June

London

London Climate Action Week

Resilience That Delivers: Turning Science into Action; public launch of the Resilient Planet Initiative

September

New York City,

Climate Week NYC

November

Belem, Brazil

Peru-Resilience Hub at COP30

Launch of Mobilising Business for Resilience with the IFC; Announcement of TECH4Resilience and RISE Innovation Challenges winners

December

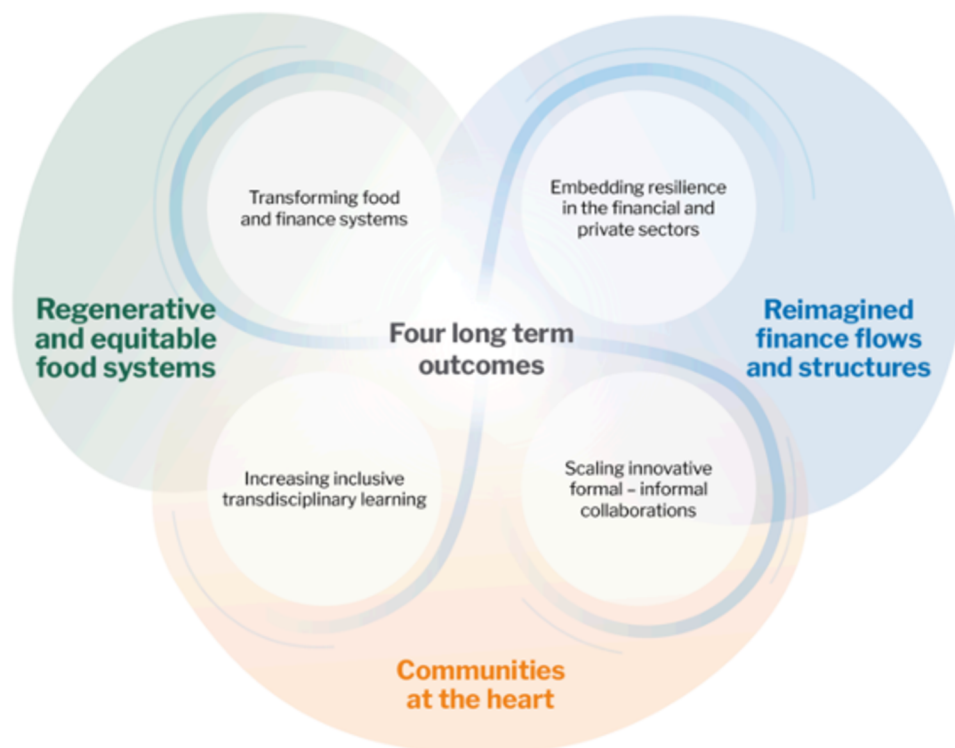
HKH-ICE 2.0 launched with ICIMOD



PHOTO CREDIT: ICIMOD

How we work

GRP's work is structured around four interlinked outcomes that guide our collaborative efforts to build resilience and transform systems. These outcomes reflect our strategic priorities and help frame the contributions of our Partners.



1) Transforming Food and Financial Systems

We support local innovators and entrepreneurs—especially youth and women—to scale context-specific food and financial solutions that strengthen resilience at the ground level.

2) Scaling Innovative Formal–Informal Collaborations

We help connect formal institutions with informal systems and communities to deliver more equitable and locally-led climate action, especially in vulnerable urban settings. GRP also plays a convening role in global policy arenas, ensuring that resilience priorities and local perspectives are heard and reflected in decision-making spaces.

3) Increasing Inclusive Transdisciplinary Learning

We create space for diverse actors to learn from one another, reflect, and share knowledge that informs resilience practice and policy. This includes brokering dialogue, facilitating transformative learning for resilience professionals, and centring the perspectives of young people and women.

4) Embedding Resilience in the Private & Financial Sectors

We engage with private sector actors to integrate resilience into their strategies and investments, unlocking innovation and finance for adaptation.



PHOTO: A discussion taking place during one of the Resilience Science Must-Knows events held in the Netherlands and Sweden.

1. Transforming food and financial systems

Restructuring food systems and nurturing resilient entrepreneurship in fragile regions.

Adaptation finance remains a fraction of what is needed, and the gap is widest for the early-stage, locally-led innovators best positioned to deliver. GRP closes that gap by combining flexible grant capital, mentorship, leadership academies, and investor exposure, moving promising ideas from concept to scale while strengthening the institutional muscle behind them.

In 2025, GRP expanded its innovation challenge portfolio significantly. Across RAIN, RISE, HKH-ICE, and TECH4Resilience, the partnership received more than 1,800 applications from over 100 countries, and supported a new cohort of grantees with seed funding, intensive mentorship, and Leadership Academies in Nairobi, Kathmandu, and online.

RAIN – Resilient Agriculture Innovations for Nature

Delivered together with **Munich Re Foundation** and **Shockwave Foundation**, RAIN backs nature-positive agriculture across East Africa. RAIN 3 round drew 784 applications, with 10 grantees selected and trained through the Nairobi Leadership Academy.

Across three rounds, RAIN has now supported more than **90,000 people** and brought **18,000+ hectares** under climate-resilient innovation across **25 projects** in Burundi, Ethiopia, Kenya, Rwanda, Tanzania, and Uganda. RAIN 3 grantees Equal Right and Ignitia pitched at the COP30 Resilience Hub Investor Forum in Belém.





HKH-ICE — Hindu Kush Himalaya Innovation Challenge for Entrepreneurs

Designed with the [International Centre for Integrated Mountain Development \(ICIMOD\)](#) and supported by the [Foreign Commonwealth and Development Office \(FCDO\)](#), HKH-ICE backs entrepreneurs across Nepal, India, Bhutan, and Bangladesh working on agriculture, water security, and sustainable tourism. The first round drew 145 applications, supported 12 enterprises, and reached more than 10,700 people across the HKH region. HKH-ICE 2.0 launched in December 2025.



RISE - Resilience Innovation through Scaling Entrepreneurship

In 2025, RISE supports solutions to resilience challenges in informal urban contexts. The global call received 577 applications from 74 countries, with six grantees selected, including Youth Innovation Lab in Nepal (HeatAI for heatwave warning systems), SOLOS in Brazil (inclusive recycling for informal waste workers), Migrasia in the Philippines (flood protection for internal migrants), and a women-led housing retrofit initiative in India delivered with SPARC and the Roof Over Our Heads (ROOH) campaign.

TECH4Resilience - Technology for Evolving Challenges in Humanitarian Contexts Challenge

Launched with funding from **Trafigura Foundation** and **Gates Foundation**, TECH4Resilience surfaces artificial intelligence applications for humanitarian preparedness and response. 305 applications from 70+ countries were received, with eight grantees selected, including projects on rapid disease detection in Nigeria, AI-supported cholera prevention in South Sudan, weather alerts in local dialects across Ethiopia and Sudan, a 24/7 digital preparedness companion in Indonesia, and decision-support tools for local authorities in Nepal and Mozambique.



Seeds of Resilient Food Systems

In partnership with the **Stockholm Resilience Centre**, Seeds of Resilient Food Systems studied 28 RAIN initiatives to understand how locally-led innovation contributes to systemic transformation in East African food systems. The collaboration produced 10 initiative-specific factsheets and feedback sessions with grantees, and now connects to the new Society for Social-Ecological Systems.

The document was like a learning document — more of an emotional paper. It captured what I see and feel about the people we serve. We see this framework as something we can learn from and apply more deeply in our work going forward.

— **Grantee reflection from a Seeds of Resilient Food Systems feedback session**



PHOTO CREDIT: TRANS WITH A MISSION

2. Scaling Innovative Formal–Informal Collaborations

Facilitating partnerships between formal and informal stakeholders for inclusive, equitable resilience.

More than a billion people live in informal urban settings where climate risk is concentrated and formal systems often fall short. GRP works to dissolve the formal–informal divide, combining grassroots delivery with global policy influence, and ensuring that the people living closest to climate risk are also the ones shaping the response.

Roof Over Our Heads (ROOH) campaign

ROOH is a women-driven global initiative addressing extreme heat vulnerability in informal settlements through affordable, low-carbon, heat-resilient housing. By the end of 2025, ROOH operated across four continents, 11 countries, and 38 cities, with 60 settlement-level Labs in place, more than 7,000 people benefiting directly, and over 1,000 tradespeople trained in heat-resilient retrofitting techniques. The campaign joined three of the COP30 Presidency's Climate Action Activation Groups and contributed to a new Informality Special Working Group under the UNFCCC Marrakech Partnership. ROOH partners include SPARC, IIED, Arup, ICCCAD, Slum Dwellers International, the World Green Building Council, C40, and the Global Covenant of Mayors. ROOH Volume III was published in 2025.





Resilience Hub

The Resilience Hub continued to grow as a year-round platform for inclusive climate action, co-managed by GRP and the Atlantic Council's Climate Resilience Center. In 2025, it brought together more than 15,000 participants and 77 partner organisations across the IMF Spring Meetings in Washington D.C., London Climate Action Week, Climate Week NYC, and the Peru Resilience Hub at COP30 in Belém. An open Expression of Interest process welcomed 34 new organisations into the Hub community, ensuring that 44% of partner organisations were new. The Hub supported the soft launch of Sri Lanka's National Adaptation Plan (2026–2035) and Peru's NDC 3.0 package, and Hub programming was covered in Carbon Brief, The Guardian, and Forbes.

At COP30 the Hub shifted, in its own words, from dialogue to delivery. A new regional partnership with the Government of Peru embedded Latin American perspectives in the programme and the broader climate summit; the Hub served as a connector between pre-COP30 activities in Rio and São Paulo and the COP30 Presidency's Granary of Solutions; and curated workspaces created space for the difficult conversations that move resilience strategies forward.

More than 60 sessions across the two weeks were organised around six resilience challenges drawn from the Resilience Science Must-Knows, bottlenecks that, left unaddressed, risk designing solutions that entrench vulnerability rather than build resilience:

1. **Resilience Pays Off:** Act early, build opportunity.
2. **Facing the Trade-Offs:** Towards thoughtfully designed transformations.
3. **Mind the Misalignment Gap:** Realigning actions across timescales, mandates, and funding cycles.
4. **Risk is Not What It Seems:** Redefining and repricing risk to unlock better responses.
5. **More Than Inclusion:** Designing systems for agency and equity.
6. **Solutions in Action:** Bridging climate, nature, and equity goals.

The [COP30 Resilience Hub Synthesis Report](#) captures the main messages from Belém and the road to COP31.



Resilient Planet Initiative

Developed with the Stockholm Environment Institute, the University of Oxford, the University of Chile, Slum Dwellers International Kenya, SPARC, and ONA, in collaboration with Race to Resilience, the Resilient Planet Initiative is a digital platform connecting communities, businesses, and cities to climate risk data, resilience solutions, and peer-to-peer exchange. Its public launch at London Climate Action Week was accompanied by user testing with women leaders in Mathare and Mukuru, Nairobi.



Shaping global policy

GRP's leadership role within the Marrakech Partnership transitioned the Sharm El-Sheikh Adaptation Agenda into the COP30 Action Agenda. The partnership co-led the Informality Working Group, and contributed to the Impact Makers and Climate-Proofing SMEs streams.

Resilience isn't built in isolation. Our work is to create the essential nexus that builds critical bridges, connecting the lived experience of our communities with the strategic vision of our leaders. It's in this shared space that changemakers at every level unite, turning common ground into a powerful, unified purpose and a collective commitment to action.

— Anastasia Brainich,
Policy Director, GRP





3. Increasing inclusive transdisciplinary learning

Brokering dialogue between science, policy, and practice, and centring young people, women, and Global South expertise.

Resilience science has too often remained within academia while decision-makers face compounding risks in real time. GRP's role is to broker, translating evidence into formats that finance, policy, and practice can act on, and elevating Global South leadership in that translation.

Resilience Science Must-Knows

Co-led by **GRP**, **Stockholm Resilience Centre** and **Future Earth**, the Resilience Science Must-Knows distils cutting-edge research from 19 resilience fields into nine critical insights for decision-makers. The methodology combined a global survey of the scientific community (more than 1,900 resilience experts reached), a 20-member Editorial Board with 35% Global South representation, and four consultation workshops with 162 leaders from 134 organisations across policy, business, and civil society. The report was launched at COP30 in Belém and received coverage in The Guardian and Forbes.

Resilience Road to Action

Resilience Road to Action is a knowledge-brokering process that turns the Resilience Science Must-Knows into actionable guidance for specific sectors. In 2025, GRP convened a CGAP-co-hosted workshop in Amsterdam with finance leaders on inclusive finance for resilience; ran a session on stress-testing the Must-Knows at Climate Week NYC; and established a new Advisory Board representing science, policy, and practice. Sector-specific guidance for infrastructure professionals is being developed with **Bentley Systems**.

South-to-South Resilience Academies

The Southern African Resilience Academy (SARA), delivered with the Centre for Sustainability Transitions at Stellenbosch University, convened 51 academy participants across eight working groups in 2025 under the theme Transformative Pathways to Resilient and Sustainable Futures. The SARA2 working groups on Equitable Resilience published a Special Issue in Ecology and Society, consolidating four years of South African research, practice, and policy thinking on resilience.



4. Embedding Resilience in the Private and Financial Sectors

Supporting a wider diversity of financial actors to embed resilience in strategy, operations, and reporting.

Adaptation finance remains a fraction of what is needed, and a substantial share of the gap sits in sectors with strong potential for private investment, commercial agriculture, water, infrastructure, and consumer goods supply chains. GRP works alongside companies, investors, and business schools to make resilience investable: grounded in science, aligned with policy frameworks, and tied to measurable outcomes.

Mobilising Business for Resilience (MBR)

Launched at COP30 with the International Finance Corporation as Strategic Knowledge Partner and eight founding signatory companies — Aon, ASTM, Bentley Systems, Blue Marble, Danone, LinkedIn, Mercy Corps Ventures, and Pula — MBR is a cross-sector platform supporting private-sector action grounded in science and aligned with global policy frameworks. Founding signatories cover finance, food systems, technology, insurance, infrastructure, and investment. Bentley Systems is building digital-twin infrastructure resilience tools; Aon and Blue Marble are advancing parametric insurance and risk modelling; Danone is integrating resilience into smallholder supply chains; and Mercy Corps Ventures is investing in early-stage resilience innovators.



Climate Resilience Awards for Business

Co-launched with the World Business Council for Sustainable Development (WBCSD) in response to the COP30 Presidency's call for non-party stakeholder solutions, the awards drew 142 case studies from 45 countries across more than 30 sectors. 83% of submissions came from SMEs, and 49.6% came from Africa. Seven category winners announced at the COP30 Resilience Hub included Google (AI-powered flood forecasting), Wave Save-Slamdam (modular reusable flood barriers in the Netherlands), CP Group (low-methane rice in Thailand), Build Up Nepal (low-carbon eco-bricks), Standard Chartered Bank (adaptation finance deals), Vermi-farm Initiative (regenerative inputs for over 18,000 Rwandan farmers), and SOLOS (circular economy livelihoods for Brazilian waste pickers, COP30 regional prize). Submissions now feed into the WBCSD Business Action Bank and The Climate Drive Action Library.

Mobilising Business Schools for Adaptation

GRP continued to strengthen the business case for resilience through partnerships with Yale School of Management, IMD, Oxford Saïd, Cape Town Graduate School of Business, FGV (Brazil), IE Business School (Spain), and the University of Cape Town. Through the UNDP-AFCIA collaboration, 22 MBA students delivered technical assistance to AFCIA grantees in 15 countries. The flagship case study, Resilience action through applied case studies — The future of coffee in Uganda, built on previous grantee Mountain Harvest and published with Harvard Business Publishing. In total, 143 students were trained in person across MBA and Master's programmes, with additional 249 participants engaged via online sessions and self-paced training materials.



PHOTO CREDIT: OCEAN IMAGE BANK, CAMERON VENTI

Bringing CEOs to the table

At London Climate Action Week, GRP convened a closed-door private sector roundtable with the COP30 High-Level Champion Dan Ioschpe, bringing together seventeen companies alongside WBCSD, C2ES, BSR, BCG, and the UN High-Level Champion team. A public panel that followed included Michael Joseph (Pula Board Chairman, Kenya Airways Chairman, M-Pesa co-founder), Namita Vikas (auctusESG), Gwendolyn Yu (JPMorgan Chase), Rodrigo Fernandes (Bentley Systems), Anthony Hobley (Howden), and Brooke Tvermoes (IBM).

Uniquely positioned diverse global network, bringing together resilience actors; challenge and constructive engagement for business



— Madeline Ojakovoh
The World Business Council for Sustainable Development (WBCSD)





211

Insights from our Partners

Three themes ran through partner engagement in 2025.

The partnership is widening, deliberately. The Resilience Hub's open Expression of Interest process welcomed 34 new partner organisations, taking the proportion of new entrants to 44%. Across the partnership, GRP also welcomed eight new organisations to join as Partners. A structured rhythm of quarterly Partner updates, Partner Spotlights on social media, and the annual virtual Partners' Meeting created more space for newer voices to engage on their own terms.

Trust is built in local languages and on local terms. Reflections from RAIN grantees confirmed what frontline organisations have long said: communicating in local languages, using culturally appropriate materials, and demonstrating local evidence are essential to changing practices. Clear economic incentives, aggregation models, and guaranteed market linkages remain the strongest drivers of uptake for regenerative and climate-smart approaches.

Knowledge products are most valuable when they hold up a mirror. Grantees engaged through the Seeds of Resilient Food Systems collaboration described the factsheets as both a learning tool and a mirror, useful precisely because they reflected back the non-linear, emotional, and political work of building resilient food systems. The partnership's communications and storytelling also aims to focus on more human-centric voices that surface these reflections rather than smoothing them away.

We asked our Partners what makes GRP unique, and their answers reflect the power of collaboration, shared learning, and locally led resilience in action:

“A network of like-minded people eager to collaborate!”
– **Aarushi Aggarwal, World Resource Institute India**

“This partnership supports our efforts to learn how others are applying principles of resilience to their work across various sectors.”
– **Ariana Karamallis, Build Change**

“Its unique contribution is the combination of trusted cross-sector convening, practical resilience innovation and knowledge exchange, including through platforms such as the Resilience Hub. Few partnerships bring together locally led resilience actors in a way that supports shared learning, collaboration and pathways from innovation toward scale.”
– **Sarah Fantoli-Frommelt, UNICEF**

“Targeted focus on resilience learning, networking, and funding”
– **Holli Jordan, Lutheran World Relief**

Looking Ahead

In the coming year, the partnership will deepen what 2025 set in motion.



Photo: Trans with a mission

- **Resilience Science Must-Knows on the Road to Action.** The Must-Knows will be translated into sector-specific guidance for finance, infrastructure, and business, including an online education module with Bentley Systems for infrastructure professionals.
- **A new global Call for Proposals.** In May 2026, GRP opened a consolidated Innovation **Challenge call** across three thematic streams, the RAIN Rural Challenge, the RISE Urban Challenge, and the TECH4Resilience Challenge. The call is open to ODA-eligible Global South countries, with at least 50% of beneficiaries to be women or youth. Winners will be announced at COP31 and will receive tailored mentoring, MEL and communications support, investor connections, and grant funding of up to USD 50,000 to grow their solutions through 2027. Supported by Trafigura Foundation, Shockwave Foundation, Munich Re Foundation, and in partnership with ICIMOD and the SEACAR Alliance.
- **Continued momentum across the innovation portfolio.** HKH-ICE 2.0 is already underway with ICIMOD. RAIN, RISE, and TECH4Resilience grantees from previous rounds will continue to receive mentorship, visibility, and investor exposure as their solutions scale.
- **Resilience Hub, beyond COP.** The Hub will continue to convene year-round at key global events, anchored by the Must-Knows and shaped by the communities closest to climate risk.
- **South-South learning.** GRP will continue to broker peer learning across the Global South, ensuring that the partnership's intellectual centre of gravity stays where the climate risk is highest.



This Action Report reflects what the partnership has built together in 2025 and the potential of collective action to advance locally-led resilience. We invite you to reflect, share your feedback, and consider how we can deepen collaboration going forward.

WWW.GLOBALRESILIENCEPARTNERSHIP.ORG
info@globalresiliencepartnership.org

GRP is made up of 90+ organisations that have joined forces to advance climate resilience. We believe that resilience underpins sustainable development in an increasingly unpredictable world. GRP is registered as a non-profit organisation in South Africa and is a programme at the Stockholm Resilience Centre at Stockholm University.

